

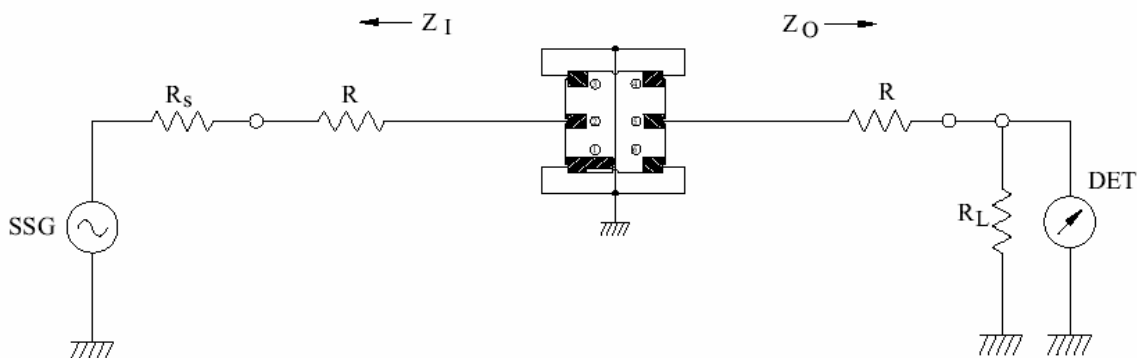
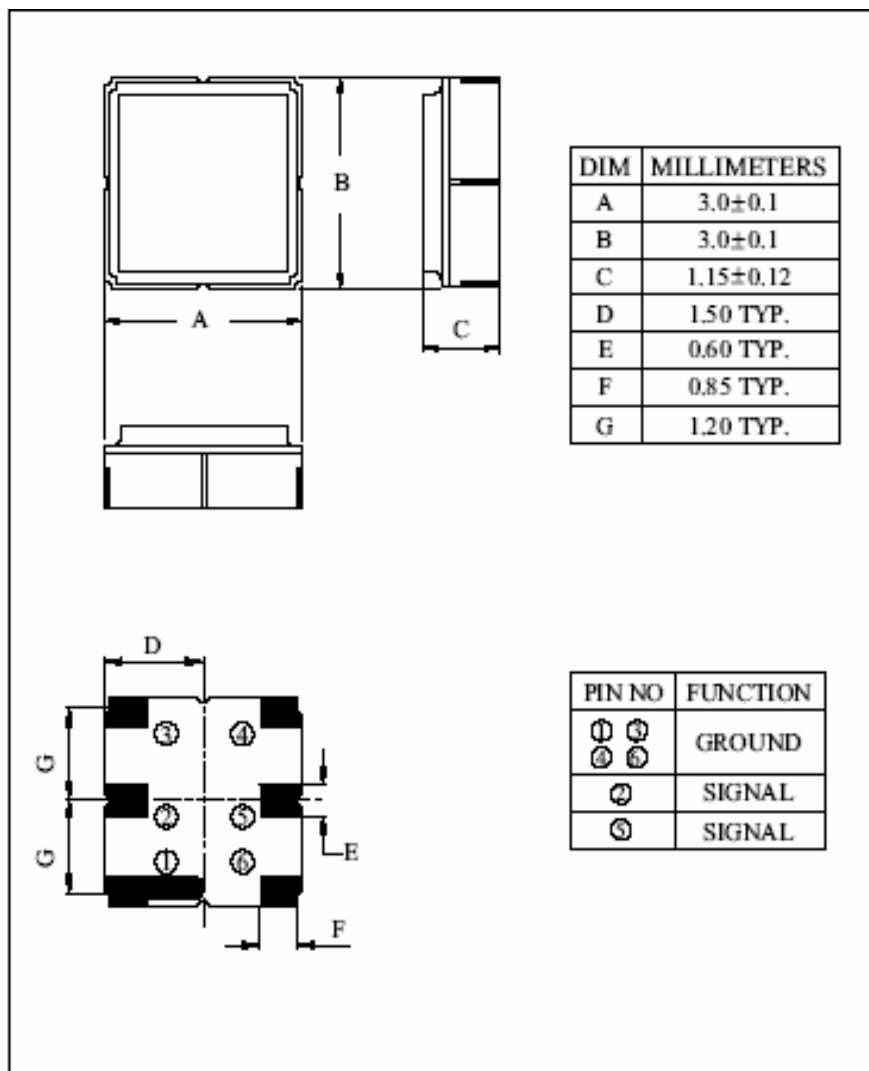
1. Part Number: SF836250C

2. Electrical Specifications:

Items	Test Condition	Min.	Typ.	Max.	Unit
Center Frequency	-	-	836.5	-	MHz
Bandwidth	-	$F_0 \pm 12.5$	-	-	MHz
Insertion Loss	$F_0 \pm 12.5$ MHz	-	1.76	3.0	dB
Ripple Level	$F_0 \pm 12.5$ MHz	-	0.77	1.5	dB
Attenuation	DC~800MHz	45	51	-	dB
	869~894MHz	25	29	-	dB
	894~1049MHz	35	40	-	dB
	1049~1200MHz	48	53	-	dB
	1200~2000MHz	35	39	-	dB
VSWR	$F_0 \pm 12.5$ MHz	-	2.0	2.2	-
Input/Output Impedance	-	-	50	-	Ω

Items	Rating	Unit
Maximum Working Voltage	5	V_{dc}
Maximum Working Power	15	dBm
Operating Temperature Range	-30 ~ +85	$^{\circ}C$
Storage Temperature Range	-40 ~ +90	$^{\circ}C$

3. Mechanical Package:



② : INPUT ① , ③ , ④ , ⑥ : GROUND ⑤ : OUTPUT

$R_s, R_L : 50 \Omega$ (Internal Impedance of Source and Load)

$R : 100 \Omega$

$Z_i(Z_o) = R_s(R_L) + R$

4. Plots:

