

# **SPECIFICATION**

## **COMMERCIALY AVAILABLE**

ITEM: SAW FILTER  
PART NUMBER: SF110008  
RoHS

ISSUED / REVISION	ENGINEER APPROVED	DOCUMENT CHECKED	DRAFTSMAN
8/14/07 **	2/17/2011 SRJ		
2/18/11 kn	2/21/2011 SRJ	2.22.2011 BF	3/2/2011 GL

***FILTRONETICS Inc***

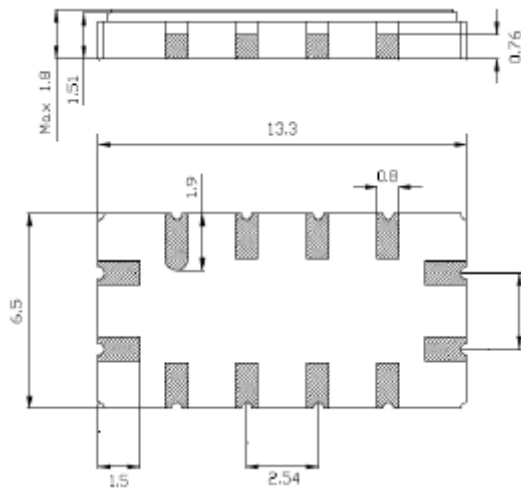
1. Part Number: SF110008

2. Electrical Specifications:

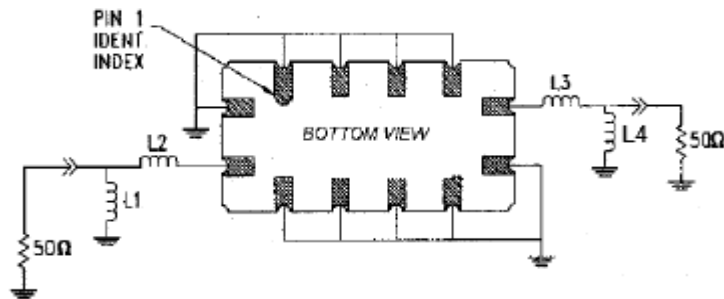
Index	Unit	Min	Typical	Max
Center Frequency	MHz	110.492	110.592	110.692
Insertion Loss	dB	-	10.5	12.0
1 dB Bandwidth	MHz	0.5	0.59	-
3 dB Bandwidth	MHz	0.9	0.96	-
30 dB Bandwidth	MHz	-	2.77	3
Passband Ripple	dB	-	0.65	1
Group Delay Variation	nsec	-	100	200
Absolute Delay	usec	-	0.9	-
Ultimate Attenuation	dB	35	45	-
Temperature Coefficient	ppm/°C	-	-0.03	-
Substrate Material		Quartz		
Package	mm <sup>3</sup>	13.3 x 6.5 x 1.8		

3. Dimension:

Marking:  
SF110008  
Date Code



Matching Configuration



L1 = L2 = 68 nH, C1 = 91 pF, C2 = 110 pF  
 Source / Load Impedance = 50Ω  
 Ambient Temperature = 25°C

4. Theoretical:

