

SPECIFICATION

COMMERCIALY AVAILABLE

ITEM: SAW FILTER

PART NUMBER: SF070060

Release Date: March 1, 2007

RoHS

Prepared By:

Revised By:kn 5/21/09

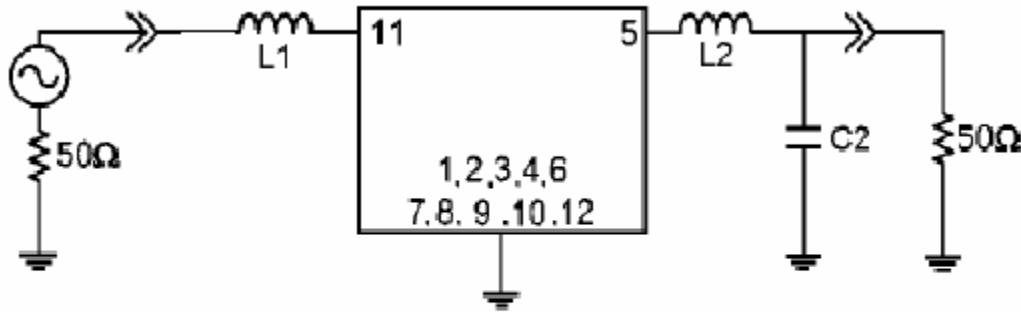
ISSUED	CHECKED	CHECKED	CHECKED	APPROVED

FILTRONETICS Inc

1. Part Number: SF070060

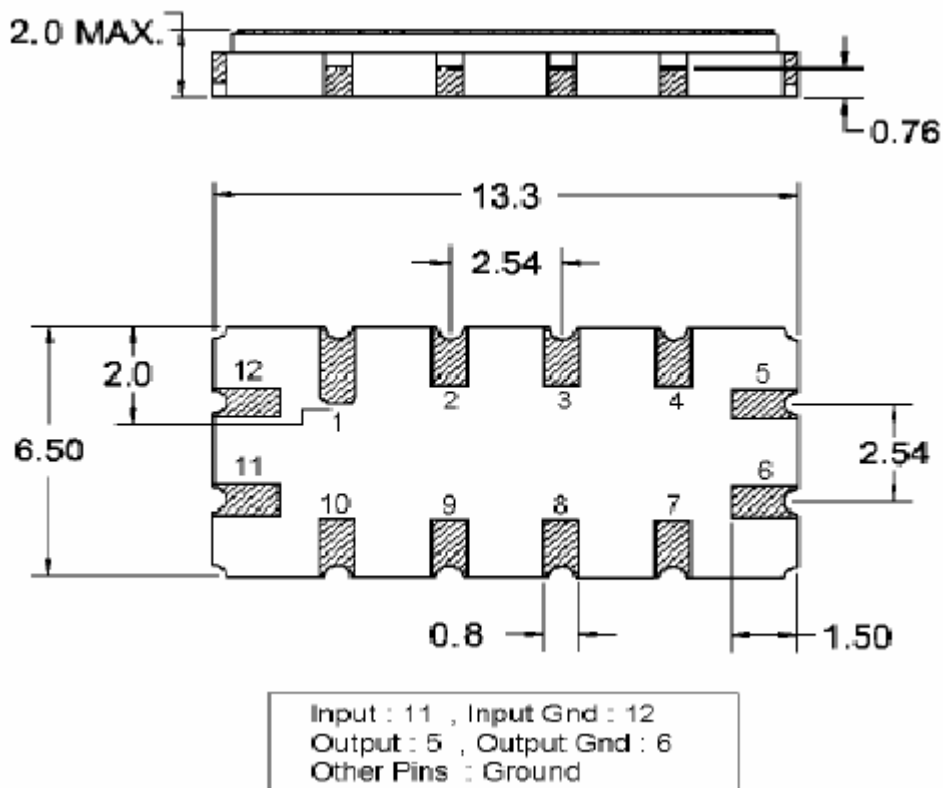
2. Electrical Specifications:

Index	Unit	Min	Typical	Max
Center Frequency	MHz	69.8	70	70.2
Insertion Loss	dB	-	7.6	9
1 dB Bandwidth	dB	5.2	5.4	-
3 dB Bandwidth	dB	6	6.5	-
40 dB Bandwidth	dB	-	9.5	10
Passband Ripple ($F_c \pm 2.1\text{MHz}$)	dB	-	0.8	1
Group Delay Variation ($F_c \pm 2.1\text{MHz}$)	nsec	-	140	200
Relative Attenuation	usec	-		-
10 MHz ~ 64.5 MHz	dBc	40	45	
75.5 MHz ~ 140 MHz	dBc	40	43	-
Temperature Coefficient	ppm/°C	-	-94	-
Substrate Material		YZ - LiNbO ₃		
Package	mm ³	13.3 x 6.5 x 2.0		



$L1 = 220 \text{ nH}$, $L2 = 150 \text{ nH}$, $C2 = 5 \text{ pF}$
 Source / Load Impedance = 50Ω
 Ambient Temperature = 25°C

3. Mechanical Package:



4. Plots:

