

# SPECIFICATION

COMMERCIALY AVAILABLE

ITEM: SAW FILTER  
PART NUMBER: SF0484010

RoHS

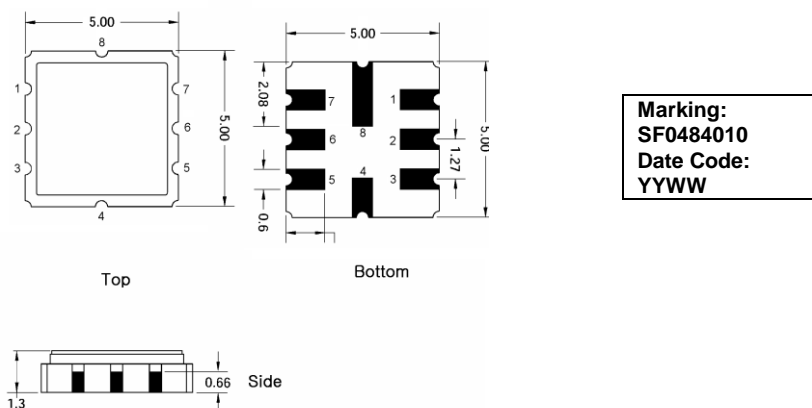
ISSUED / REVISION	ENGINEER APPROVED	DOCUMENT CHECKED	DRAFTSMAN
12/10/2019 <sup>(ASM)</sup>			

***FILTRONETICS Inc***

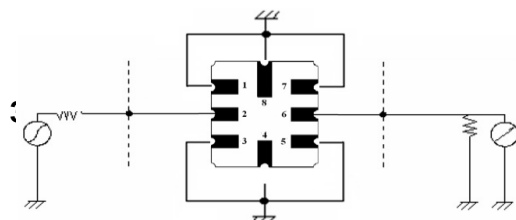
1. Electrical Specifications:

Item	Unit	Condition	Min	Typ	Max
Center Frequency	MHz	F <sub>o</sub>	484.50		
Pass Band Width	MHz	479.5 ~ 489.5 MHz	10.0		
Insertion Loss	dB	Passband	-	2.8	3.5
Ripple Deviation	dB	Pass Band	-	0.7	1.5
Stop Band Rejection (Absolute Attenuation)	dB	DC ~ F <sub>c</sub> -45 MHz	40	50	-
		F <sub>c</sub> +70 ~ F <sub>c</sub> +500 MHz	40	45	-
I/O VSWR	-	Passband	-	1.7	2.3
Terminating Impedance	Ω	50			
Maximum DC Voltage	V	3			
Maximum Input Power	dBm	20			
Operating Temperature	°C	-30 ~ +75			
Storage Temperature	°C	-40 ~ +85			

2. Dimensions:



3. Matching Configuration:



No Matching Required  
 Source / Load Impedance = 50Ω  
 Ambient Temperature = 25°C