

SPECIFICATION

COMMERCIALY AVAILABLE

ITEM: SAW FILTER
 PART NUMBER: SF0211400A

Revision Made:

ISSUED / REVISION	ENGINEER APPROVED	DOCUMENT CHECKED	DRAFTSMAN	DOCUMENT CHECKED
9/27/04 **	3/10/2010 SRJ			

FILTRONETICS Inc

1. APPLICATION

This specification shall cover the characteristics of SAW filter with 211.5M used for IF applications.

2. PART NUMBER

PART NO	SF0211400A
PACKAGING	TAPE & REEL

3. SPECIFICATIONS

DC Voltage VDC	0V
AC Voltage Vpp	10V50Hz/60Hz
Operation temperature	-30 to +60 °C
Storage temperature	-45 to +85 °C
RF Power Dissipation	0dBm

Preliminary data Characteristics

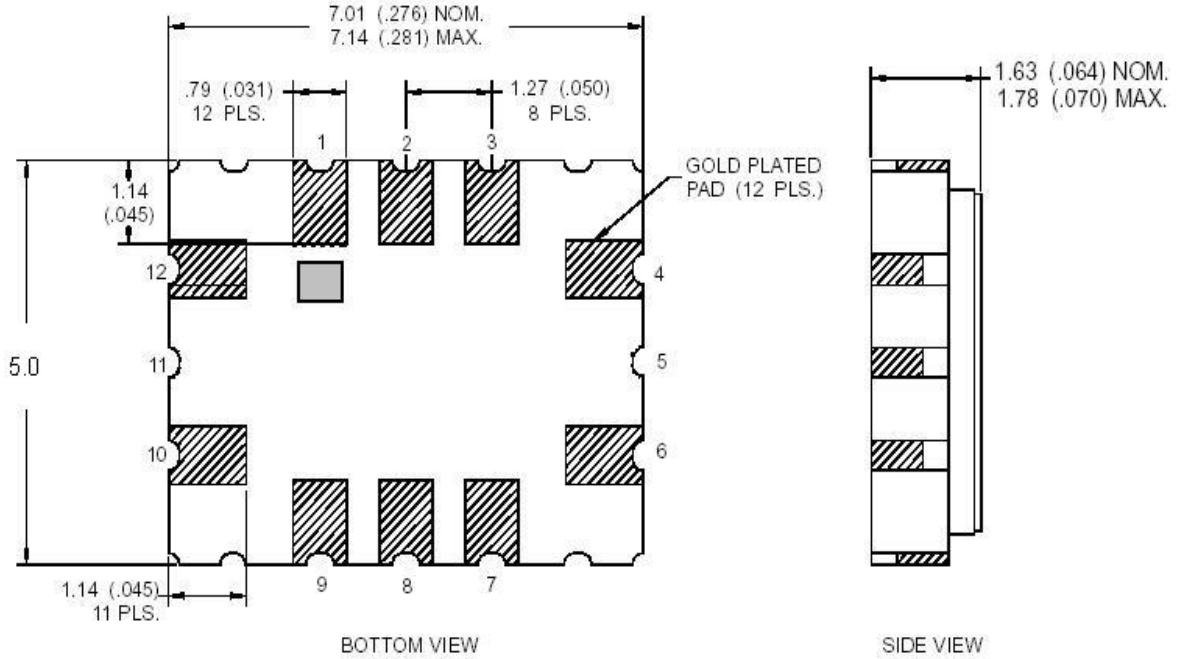
Ambient temperature $T_A=25^{\circ}\text{C}$

Source impedance $Z_S=50\Omega$

load impedance $Z_L=50\Omega$

Characteristics	Minimum	Typical	Maximum	Unit
Insertion attenuation 211.50MHz Reference level for the following data		21.0	22.0	dB
Center frequency f_c	-	211.5	-	MHz
Pass Bandwidth	BW3	+/-20.0	-	MHz
	BW40	-	+/-27.0	MHz
Lower side lobe 150.0-180.0MHz	32.0	50.0		dB
Upper side lobe 238.0-268.0MHz	32.0	45.0		dB
Amplitude ripple		1.0	2.0	dB
Group delay Ripple (90% of BW3)		-	+/-100	ns
Temperature coefficient of frequency TC_f		-94		ppm/k

4. DIMENSIONS



Pin Assignments

10	Input
4	Output
12	Input-ground
6	Output-ground
1,2,3,7,8,9	Ground

5. CAUTION

5-1. This is an electrostatic sensitive device.

5-2. Ultrasonic cleaning may cause deterioration and destruction of the components Please avoid ultrasonic cleaning.

6. Packing

6.1 Dimensions

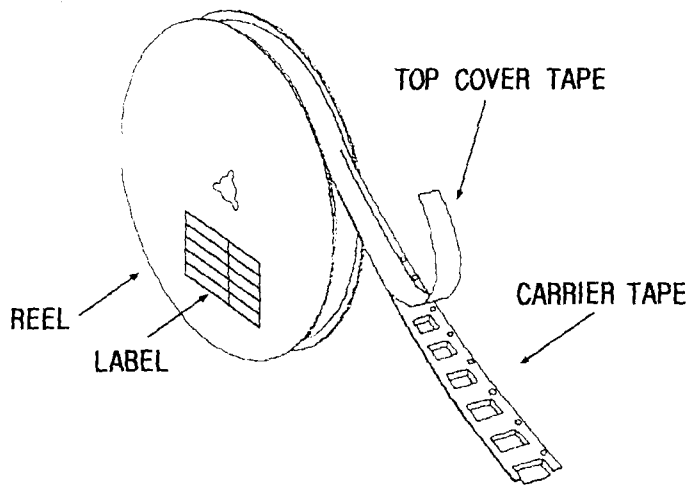
- (1) Carrier Tape: Figure 1
- (2) Reel: Figure 2
- (3) The product shall be packed properly not to be damaged during transportation and storage.

6.2 Reeling Quantity

- 1000 pcs/reel 7"
- 3000 pcs/reel 13"

6.3 Taping Structure

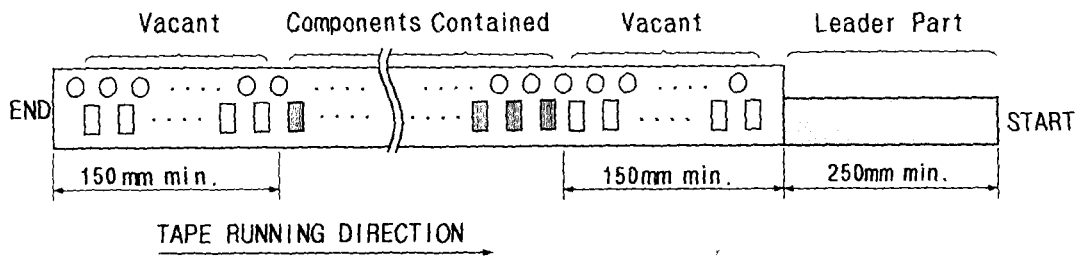
- (1) The tape shall be wound around the reel in the direction shown below.



(2) Label

Device Name	SF0211400A
User Name	Filtronetics, Inc
Lot No.	

(3) Leader part and vacant position specifications.

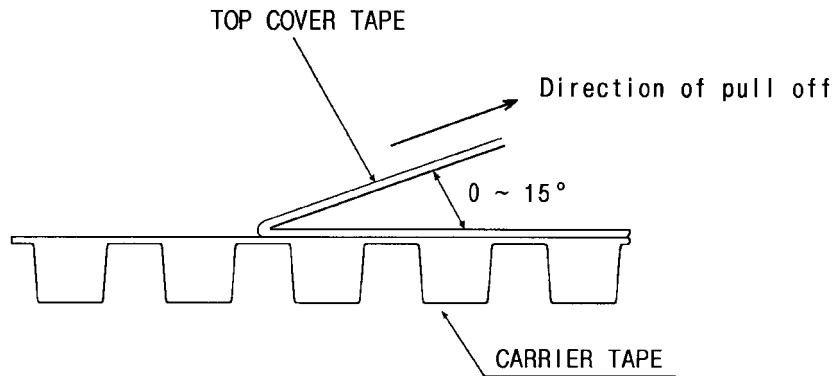


7. TAPE SPECIFICATIONS

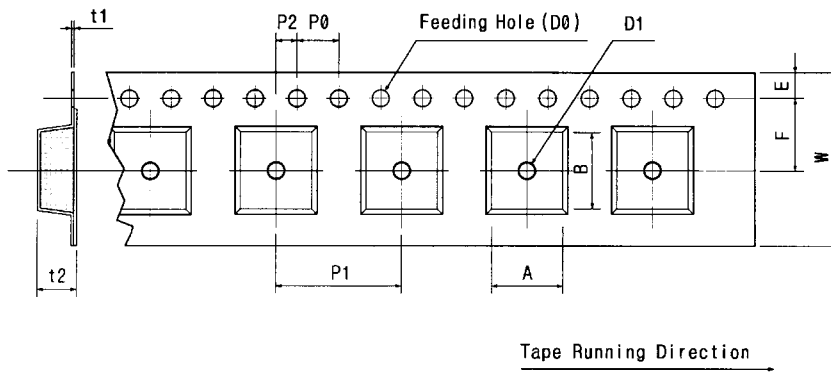
7.1 Tensile Strength of Carrier Tape: 4.4N/mm width

7.2 Top Cover Tape Adhesion (See the below figure)

- (1) pull off angle: 0~15°
- (2) speed: 300mm/min.
- (3) force: 20~70g



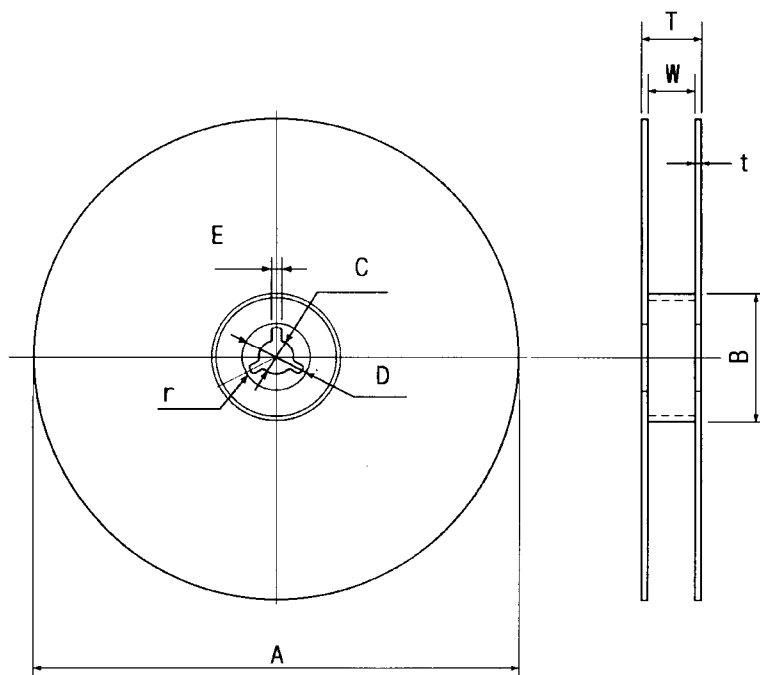
[Figure 1] Carrier Tape Dimensions



[Unit:mm]

W	F	E	P0	P1	P2	D0	D1	t1	t2	A	B
12.00	7.50	1.75	4.00	8.00	2.00	Ø1.50	Ø1.5	0.25	2.20	5.80	7.30
±0.30	±0.10	±0.10	±0.10	±0.10	±0.10		±0.25	±0.05	±0.10	±0.10	±0.10

[Figure 2]



[Unit:mm]

A	B	C	D	E	W	t	r
Ø330	Ø100	Ø13	Ø21	2	16.8	3	1.0
±1.0	±0.5	±0.5	±0.8	±0.5	±0.3	max.	max.