

SPECIFICATION
COMMERCIALY AVAILABLE

SAW BAND PASS
PART NUMBER: SF0170053

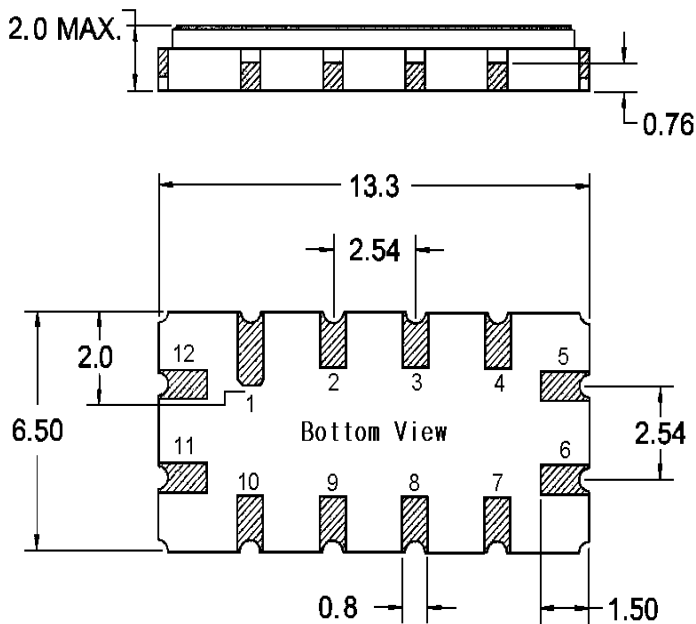
ISSUED / REVISION	ENGINEER APPROVED	DOCUMENT CHECKED	DRAFTSMAN
1/2/14 ^(kn)	01/06/2014 TFG		01/06/2014 GL

FILTRONETICS Inc

1. Electrical Specifications:

Frequency Characteristics		Minimum	Typical	Maximum
Center Frequency	MHz	-	170.00	-
Insertion Loss	dB	-	28.00	30.00
1dB Bandwidth	MHz	52.00	52.35	-
3dB Bandwidth	MHz	-	53.20	-
40dB Bandwidth	MHz	-	56.80	57.50
Attenuation	dB	40	45	-
Amplitude Ripple(±25MHz)	dB	-	0.70	1.20
Group Delay Variation(±25MHz)	nsec	-	30	60
Absolute Delay	µsec	-	0.95	-
Temperature Coefficient of Frequency	ppm/°C	-	-72	-
Package	mm	13.3X6.5 (SMD)		

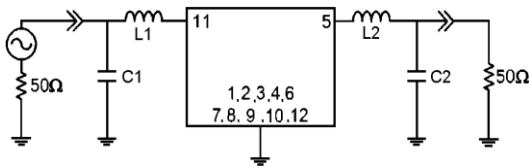
2. Dimension:



Marking:
SF0170053
Date Code

Input : 11 , Input Gnd : 12
Output : 5 , Output Gnd : 6
Other Pins : Ground

Matching Configuration



50Ω Single-ended
L1 = L2 = C1 = C2 = T.B.D
Source / Load Impedance = 50Ω
Ambient Temperature = 25°C