

SPECIFICATION

COMMERCIALY AVAILABLE

SAW BAND PASS
PART NUMBER: SF0140012

RoHS

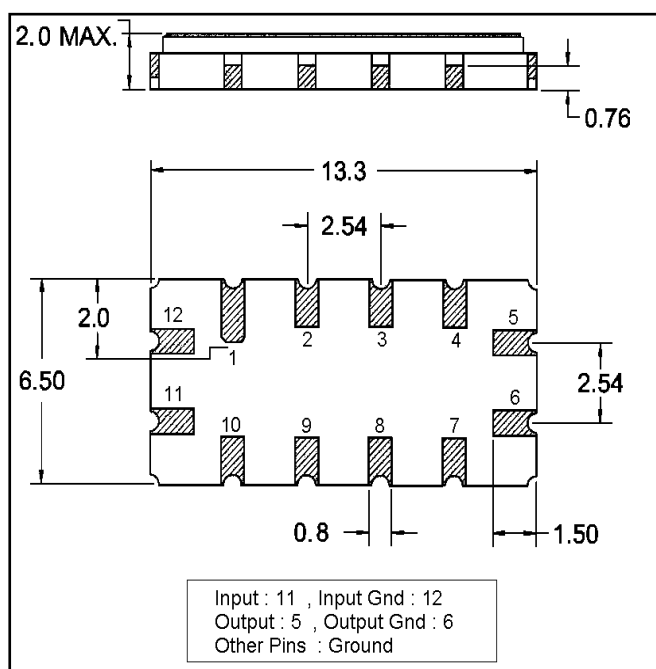
ISSUED / REVISION	ENGINEER APPROVED	DOCUMENT CHECKED	DRAFTSMAN
7/12/17 ^(kn)			

FILTRONETICS Inc

1. Electrical Specifications:

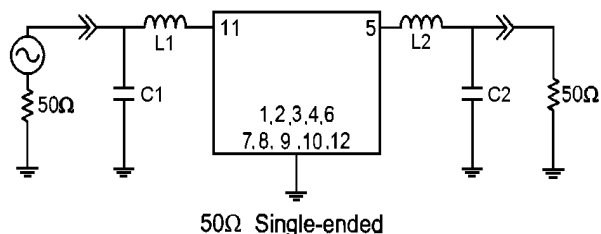
Parameter	Unit	Min.	Typ.	Max.
Center Frequency	MHz	139.90	140.00	140.10
Insertion Loss	dB	7.00	8.30	9.00
1dB Bandwidth	MHz	-	12.16	-
3dB Bandwidth	MHz	12.80	13.10	-
40dB Bandwidth	MHz	-	17.50	18.50
Passband Ripple (Fc ±5.0MHz)	dB	-	0.50	1.00
Group Delay Variation (Fc ±5.0MHz)	nsec	-	40	70
Absolute Delay	µsec	-	0.78	-
Ultimate Attenuation	dB	40	45	-
Substrate Material	-	Yz-LiNbO ₃		
Temperature Coefficient	ppm/°C	-86		

2. Dimension:



Marking:
SF0140012
Date Code

Matching Configuration



L1 = 39nH, L2 = 39nH, C1 = 36pF, C2 = 30pF
Source / Load Impedance = 50Ω
Ambient Temperature = 25°

3. Simulation:

