

**SPECIFICATION**  
**COMMERCIALY AVAILABLE**

**SAW BAND PASS**  
**PART NUMBER: SF01400003**  
**RoHS**

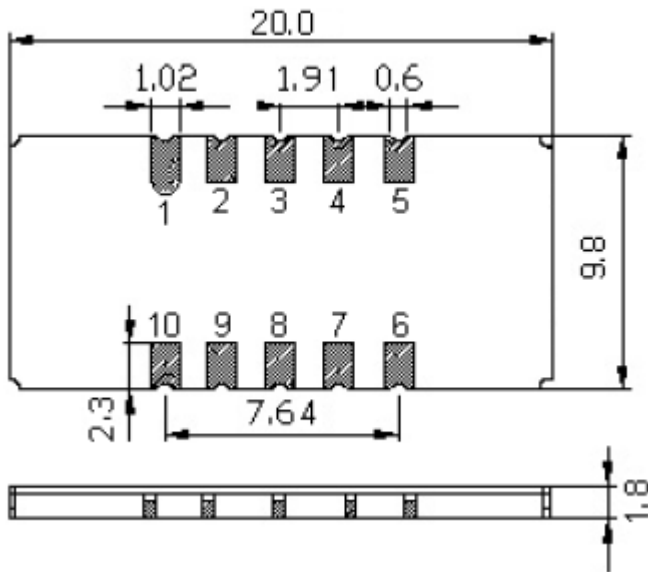
ISSUED / REVISION	ENGINEER APPROVED	DOCUMENT CHECKED	DRAFTSMAN
10/10/13 <sup>(kn)</sup>	11/13/2013 TFG		11/13/2013 GL

***FILTRONETICS Inc***

1. Electrical Specifications:

Parameter	Unit	Min	Typ	Max
Center Frequency	Mhz	139.90	140.00	140.10
Insertion Loss	dB	-	5.06	8.00
1dB Bandwidth	Mhz	-	0.19	-
3dB Bandwidth	Mhz	0.25	0.35	-
30dB Bandwidth	Mhz	-	0.61	0.80
Relative Attenuation Fc ±5.0Mhz ~ Fc ±100.0Mhz	dB	40	50	-
Passband Ripple	dB	-	0.53	1.00
Absolute Delay	µsec	-	1.96	-
Ultimate Attenuation	dB	-	30	-
Operating Temperature	°C	-40 to +75		
Temperature Coefficient	ppm/°C	-0.03		

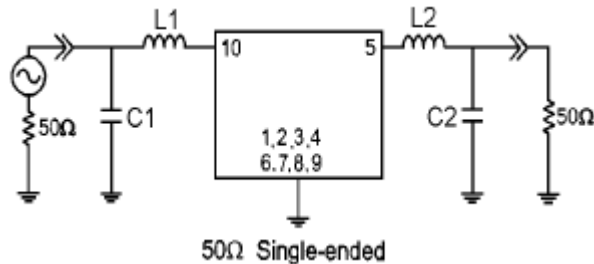
2. Dimension:



Marking:  
SF01400003  
Date Code

10: Input, 1: In Gnd  
5: Output, 4: Out-Gnd  
2, 3, 6, 7, 8, 9: Case Gnd

Matching Configuration



L1=, L2=, C1=, C2= T.B.D.  
Source / Load Impedance = 50Ω  
Ambient Temperature = 25°C

3. Typical Performance:

