

SPECIFICATION

COMMERCIALY AVAILABLE

ITEM: SAW FILTER
 PART NUMBER: SF0070015

Release Date: September 22, 2009



RoHS

Prepared By: ds

Revised By:

Revised Date:

Revision Made:

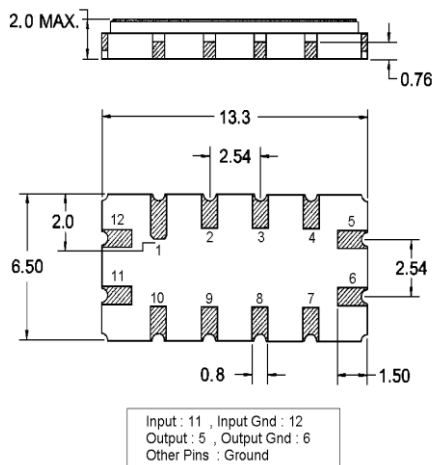
ISSUED	CHECKED	CHECKED	CHECKED	APPROVED

FILTRONETICS Inc

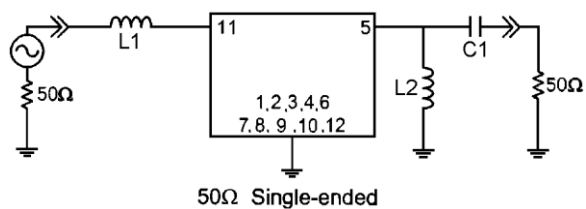
1. Electrical Specifications:

Parameter	Unit	Min.	Typ.	Max.
Center Frequency	MHz	69.92	70.00	70.08
Insertion Loss	dB	-	23.27	25.00
1dB Bandwidth	MHz	15.00	15.42	-
3dB Bandwidth	MHz	-	15.88	-
40dB Bandwidth	MHz	-	17.88	18.00
Passband Ripple	dB	-	0.75	1.00
Group Delay Variation	nsec	-	50	100
Absolute Delay	µsec	-	1.52	-
Ultimate Attenuation	dB	40	48	-
Substrate Material	-	128-LiNbO ₃		
Temperature Coefficient	ppm/°C	-72		

2. Mechanical Package



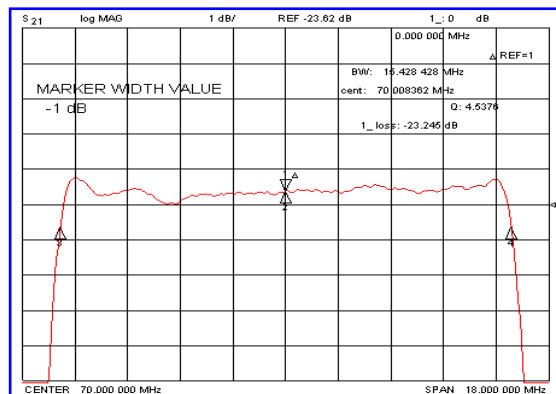
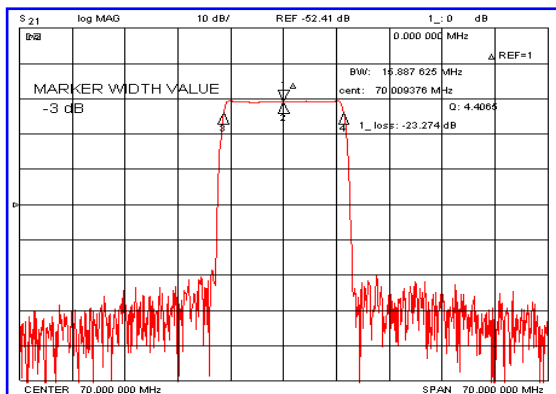
Matching Configuration



L1=L2=180nH, C1=39pF
Source / Load Impedance = 50Ω
Ambient Temperature = 25°C

Marking:
SF0070015
YY/MM

3. Typical Performance:



4. Graphs

