

SPECIFICATION

COMMERCIALY AVAILABLE

ITEM: SAW FILTER
PART NUMBER: SF0070006
RoHS

ISSUED	CHECKED	CHECKED	CHECKED
5/22/09 **			
4/2/10 kn	7/29/2010 SRJ	7/29/2010 BF	
5/10/11 kn	5/16/2011 SRJ	5/18/2011 BF	12/21/2011 GL

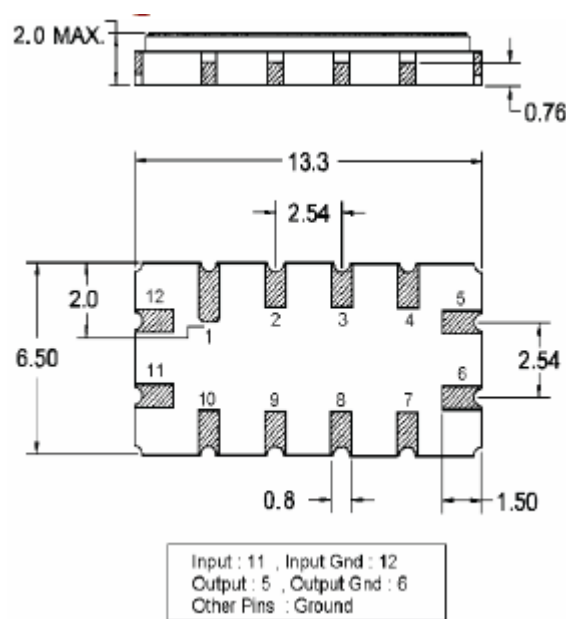
FILTRONETICS Inc

1. Electrical Specifications:

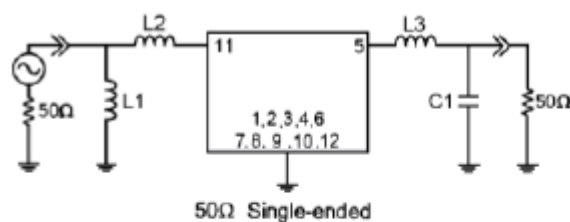
Index	Unit	Min	Typical	Max
Center Frequency	MHz	69.85	70	70.15
Insertion Loss	dB	-	8.8	10.5
1 dB Bandwidth	dB	5.1	5.47	-
3 dB Bandwidth	dB	6	6.44	-
40 dB Bandwidth	dB	-	9.85	10.5
Passband Ripple	dB	-	0.6	1
Group Delay Variation	nsec	-	-	-
Absolute Delay	usec	-	45	-
Ultimate Attenuation	dB	40	45	-
Temperature Coefficient	ppm/°C	-	-86	-
Substrate Material		LiNbO ₃		
Package	mm ³	13.3 x 6.5 x 2.0		

2. Mechanical Package:

Marking:
SF0070006
YY/MM



Matching Configuration:



$$L1 = 150 \text{ nH}, L2 = 56 \text{ nH}, L3 = 56 \text{ nH}, C1 = 9 \text{ pF}$$

$$\text{Source / Load Impedance} = 50 \Omega$$

$$\text{Ambient Temperature} = 25^\circ\text{C}$$

3. Typical Performance:

