

SPECIFICATION

COMMERCIALLY AVAILABLE

SAW BAND PASS
PART NUMBER: SF0070004C

RoHS

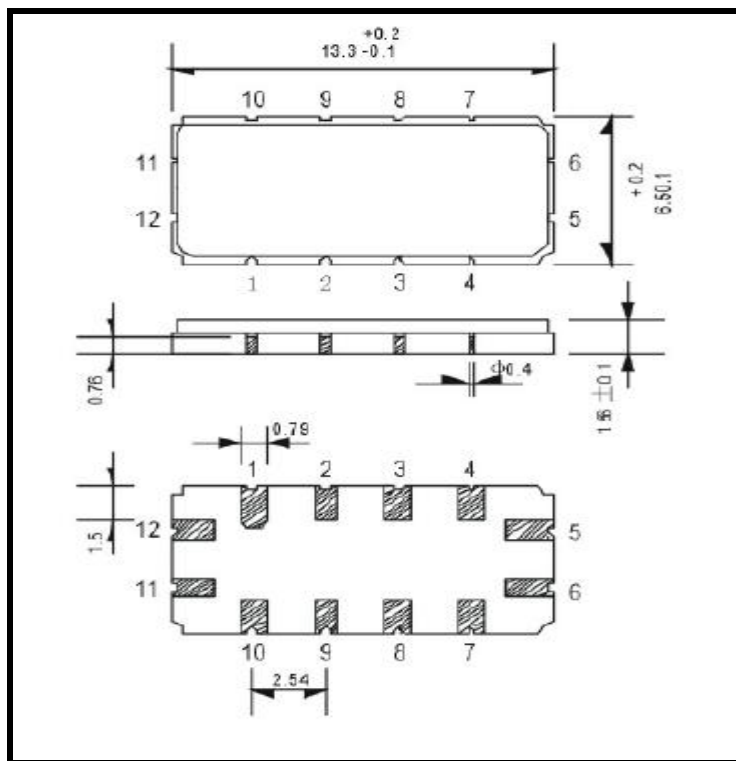
ISSUED / REVISION	ENGINEER APPROVED	DOCUMENT CHECKED	DRAFTSMAN
1/29/18 ^(kn)			

FILTRONETICS Inc

1. Electrical Specifications:

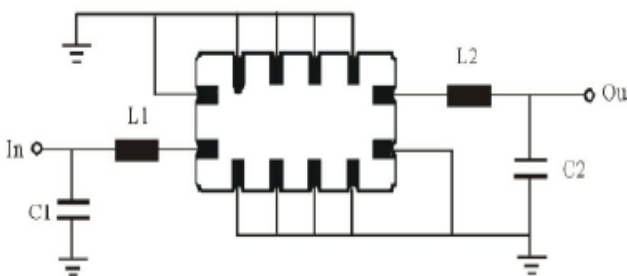
Parameter	Unit	Minimum	Typical	Maximum
Center Frequency	MHz	69.85	70.00	70.15
Insertion Loss at Fo	dB	-	7.5	9.0
1 dB Bandwidth	MHz	3.40	-	-
3 dB Bandwidth	MHz	4.00	-	-
40 dB Bandwidth	MHz	-	-	8.0
Phase Linearity: 68.6 – 71.4 MHz	deg	-	4.75	6
Group Delay Variation: 68.6 – 71.4 MHz	nsec	-	90	150
Absolute Group Delay	µsec	-	0.95	-
Passband Variation	dB	-	0.50	1.00
Ultimate Rejection	dB	40	42	-
Ambient Temperature	°C	-40	25	80

2. Dimension:



Marking:
SF0070004C
Date Code

Matching Circuit



L1= , L2= , C1 = , C2 = TBD after first build
Source / Load Impedance = 50 Ohm

3. Simulation:

