

SPECIFICATION
COMMERCIALLY AVAILABLE

SAW BAND PASS
PART NUMBER: SF0070001K

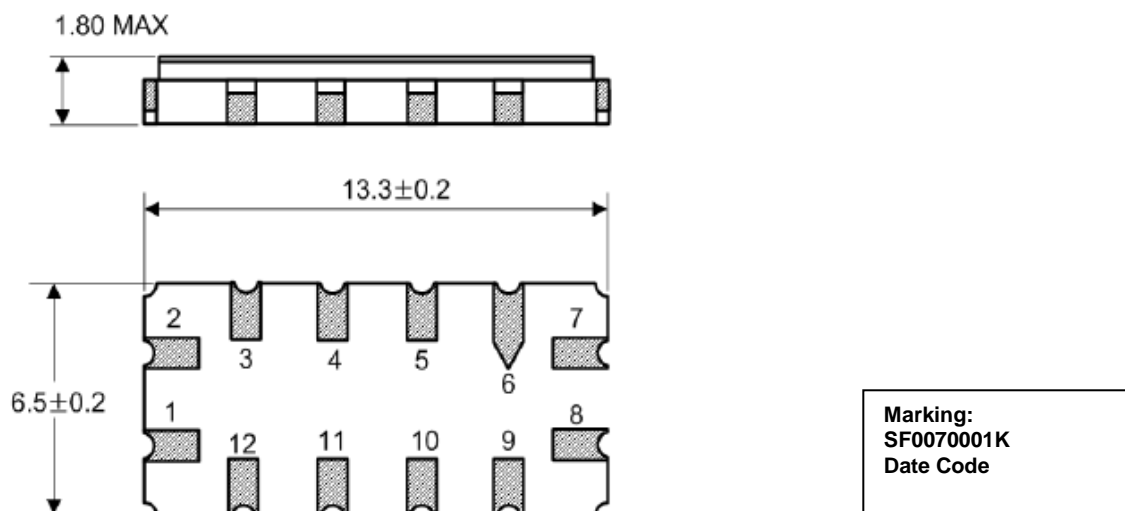
ISSUED / REVISION	ENGINEER APPROVED	DOCUMENT CHECKED	DRAFTSMAN
03/08/2019 ^(ASM)			

FILTRONETICS Inc

1. Electrical Specifications:

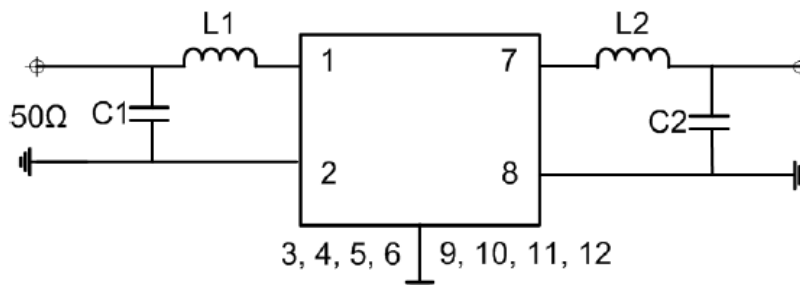
Index	Unit	Min	Typical	Max
Center Frequency	MHz	69.90	70.00	70.10
Insertion Loss	dB	-	9.2	11.5
-1 dB Bandwidth	MHz	0.80	0.92	-
-3 dB Bandwidth	MHz	1.10	1.20	-
-40 dB Bandwidth	MHz	-	2.20	2.30
Amplitude Ripple	dB	-	0.70	1.00
Group Delay Variation	nsec	-	350	400
Ultimate Rejection	dB	45	55	-
Package	mm ²	13.3 x 6.5 x 1.8		
Source and Load Impedances	Ω	50 / 50		

2. Dimension:



- 1 : RF Input 2 : RF Input Ground
- 7 : RF Output 8 : RF Output Ground
- 3, 4, 5, 6, 9, 10, 11, 12 : Ground

3. Matching Configuration:



L1=330~480nH, L2=330~480nH, C1=82pF, C2=82pF
 Source / Load Impedance = 50Ω
 Ambient Temperature = 25°C

4. Response Plots:

