

SPECIFICATION

COMMERCIALY AVAILABLE

SAW BAND PASS
PART NUMBER: SF0062005
RoHS

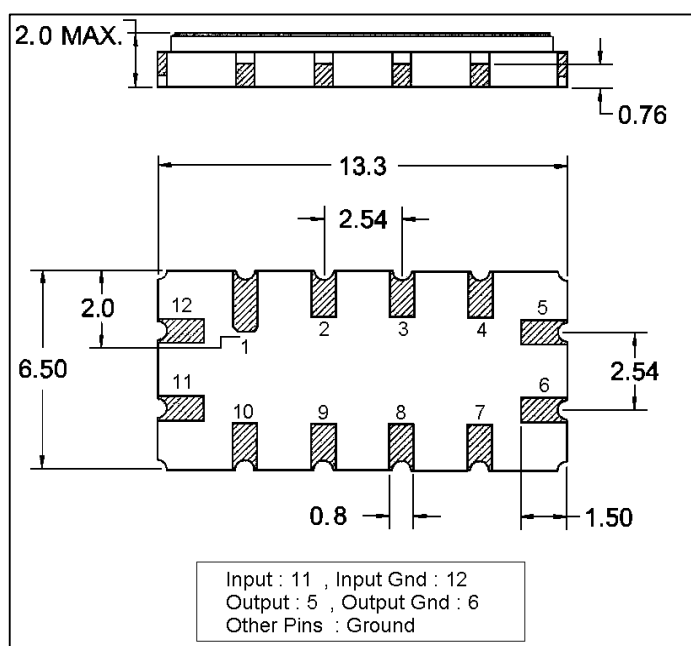
ISSUED / REVISION	ENGINEER APPROVED	DOCUMENT CHECKED	DRAFTSMAN
3/8/16 ^(kn)			

FILTRONETICS Inc

1. Electrical Specifications:

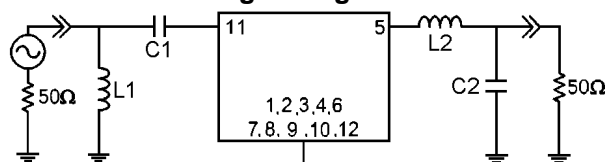
Parameter	Unit	Min.	Typ.	Max.
Center Frequency	MHz	-	62.00	-
Insertion Loss	dB	-	13.50	15.00
1dB Bandwidth	MHz	4.00	4.36	-
3dB Bandwidth	MHz	-	4.81	-
40dB Bandwidth	MHz	-	6.68	6.80
Passband Ripple($F_c \pm 1.875$ MHz)	dB	-	0.40	1.00
Group Delay Variation($F_c \pm 1.875$ MHz)	nsec	-	80	150
Absolute Delay	μ sec	-	1.48	-
Ultimate Attenuation	dB	40	43	-
Substrate Material	-	YZ-LiNbO ₃		
Temperature Coefficient	ppm/ $^{\circ}$ C	-86		

2. Dimension:



Marking:
SF0062005
Date Code

Matching Configuration



L1 = 100nH, L2 = 22nH, C1 = 150pF, C2 = 36pF
Source / Load Impedance = 50 Ω
Ambient Temperature = 25 $^{\circ}$ C

3. Simulation:

