

SPECIFICATION

COMMERCIALY AVAILABLE

MONOLITHIC CRYSTAL BAND PASS

PART NUMBER: M10DBB

RoHs

| ISSUED / REVISION | ENGINEER APPROVED | DOCUMENT CHECKED | DRAFTSMAN |
|-------------------|-------------------|------------------|---------------|
| 10/26/12 kn | 12/10/2012 TFG | | 12/10/2012 GL |
| | | | |
| | | | |

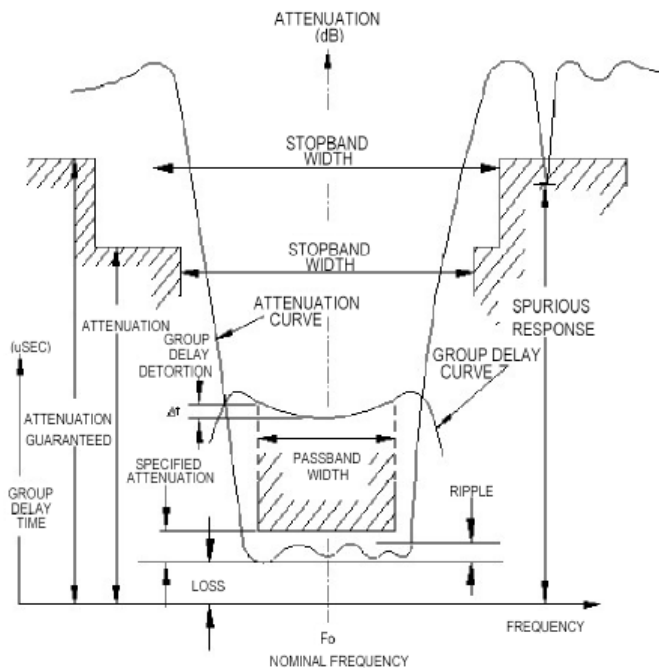
FILTRONETICS Inc

1. Part Number: M10DBB

2. Electrical Specifications:

| | | |
|-------------------------------|--------------------------------|---------------------|
| Center Frequency (Fo): | | 10.7MHz |
| 3dB Pass Band: | | ±6KHz Min |
| 40dB Stop Band: | | ±20KHz Max |
| Ultimate Attenuation: | (Fo ±KHz)+300 to +1000 | 65dB |
| | (Fo ±KHz) -200 to -1000 | 80dB |
| Ripple: | | 1.0dB Max |
| Insertion Loss: | | 1.5dB Max |
| Terminating Impedance: | | Zt (Z // pF) |
| | | 1800 // 2.5 |
| Number of poles: | | 4 |

MEASUREMENT DEFINITIONS



R1 = TERMINATING RESISTANCE
 C1 = TERMINATING CAPACITANCE
 C2 = JUNCTION CAPACITANCE

CONSULT FACTORY FOR
 ALTERNATE LOADING CIRCUITS

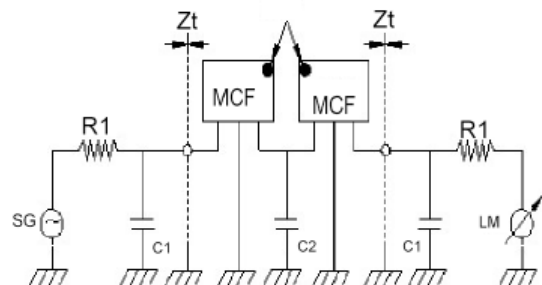
4 pole MCF

Zt: TERMINATING IMPEDANCE

HC-49 / U & UM- PACKAGES

TEST CIRCUIT

COLORED
 DOT



3. Mechanical Package:

CASE HC—_

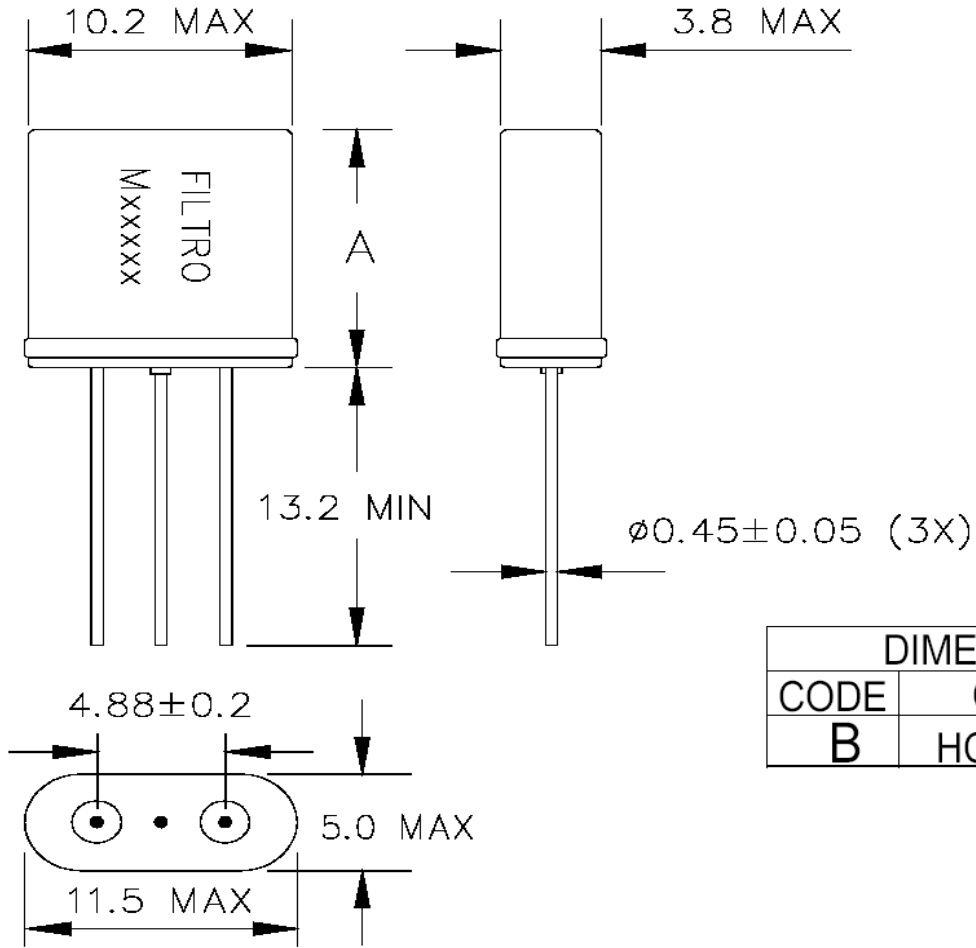


FIGURE M1 CASE HC