

SPECIFICATION

COMMERCIALLY AVAILABLE

MONOLITHIC CRYSTAL BAND PASS

PART NUMBER: M10DBA

RoHs

ISSUED / REVISION	ENGINEER APPROVED	DOCUMENT CHECKED	DRAFTSMAN
10/26/12 kn	12/10/2012 TFG		12/10/2012 GL

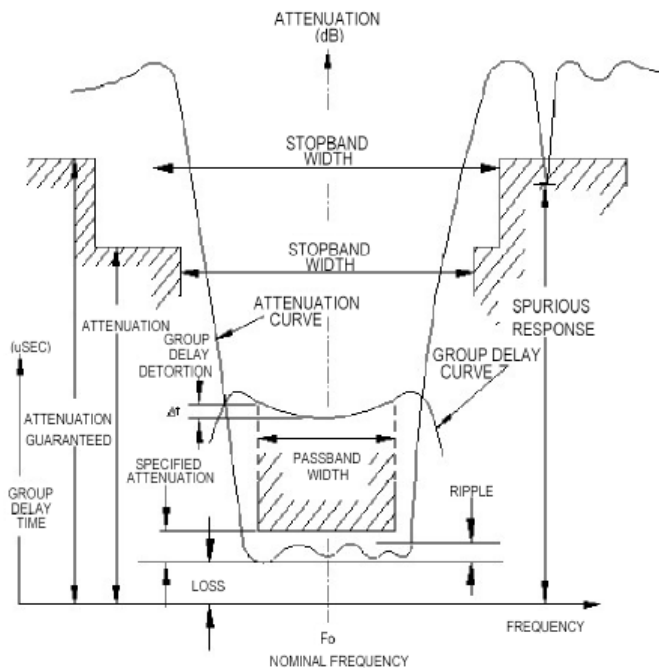
FILTRONETICS Inc

1. Part Number: M10DBA

2. Electrical Specifications:

Center Frequency (Fo):		10.7MHz
3dB Pass Band:		±6KHz Min
40dB Stop Band:		±20KHz Max
Ultimate Attenuation:	(Fo ±KHz)+300 to +1000	65dB
	(Fo ±KHz) -200 to -1000	80dB
Ripple:		1.0dB Max
Insertion Loss:		1.5dB Max
Terminating Impedance:		Zt (Z // pF)
		1800 // 2.5
Number of poles:		4

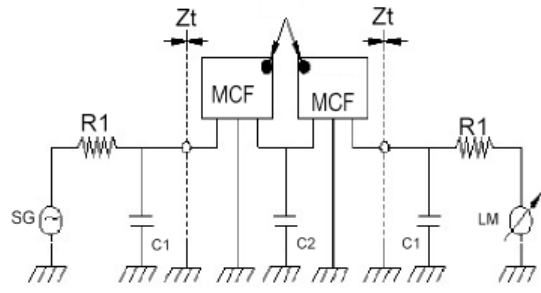
MEASUREMENT DEFINITIONS



R1 = TERMINATING RESISTANCE
 C1 = TERMINATING CAPACITANCE
 C2 = JUNCTION CAPACITANCE
 CONSULT FACTORY FOR ALTERNATE LOADING CIRCUITS

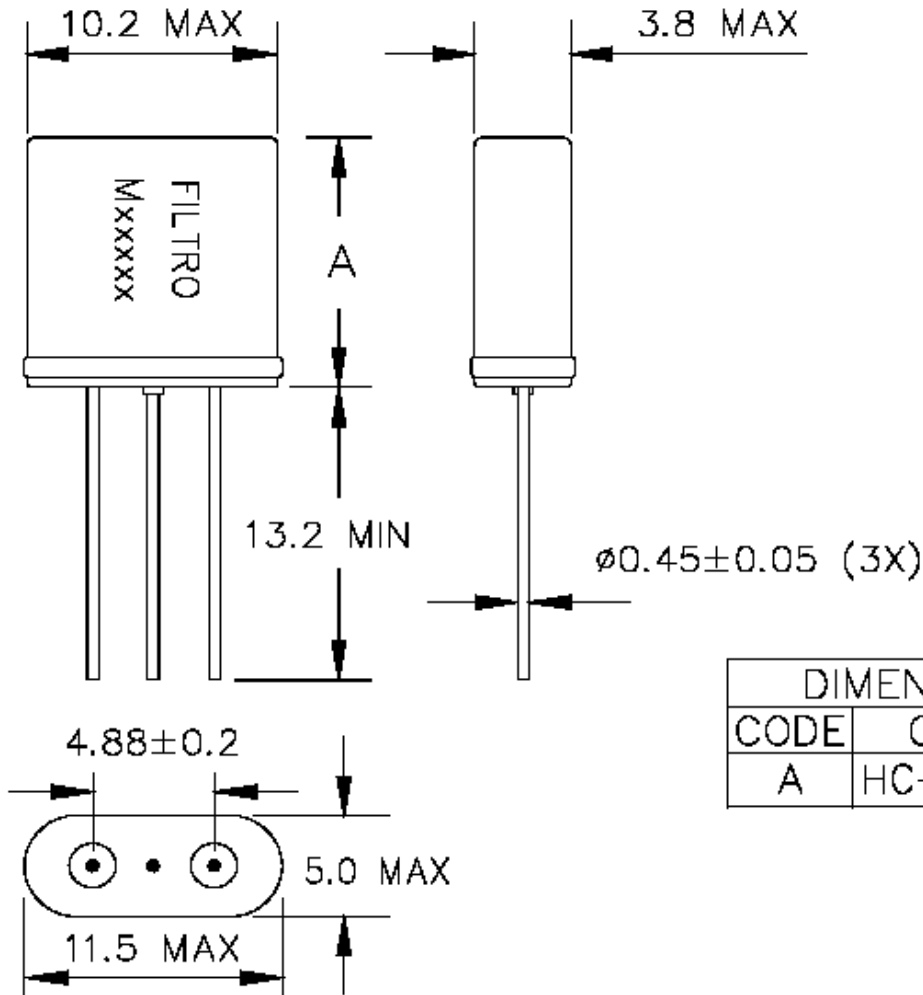
4 pole MCF
 Zt: TERMINATING IMPEDANCE
 HC-49 / U & UM- PACKAGES

TEST CIRCUIT
 COLORED DOT



3. Mechanical Package:

CASE HC—_



DIMENSIONS (mm)		
CODE	CASE	A
A	HC-49/UL	13.5 MAX

FIGURE M1 CASE HC