

SPECIFICATION

COMMERCIALY AVAILABLE

ITEM: MONOLITHIC CRYSTAL FILTER

PART NUMBER: M10ABA

RoHs

| ISSUED / REVISION | ENGINEER APPROVED | DOCUMENT CHECKED | DRAFTSMAN |
|-------------------|-------------------|------------------|---------------|
| 8/19/11 PM | 10/05/2011 TFG | | 10/05/2011 GL |
| | | | |

FILTRONETICS Inc

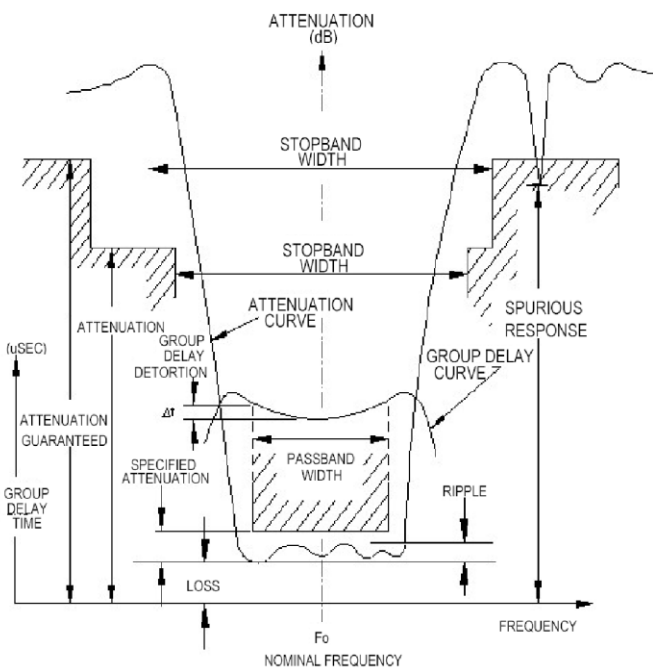
1. Part Number: M10ABA

2. Electrical Specifications:

| | |
|---|-------------------------|
| Center Frequency (Fo): | 10.7MHz |
| 3 dBc Bandwidth: | ± 3.75KHz Min |
| 40dBc Stopband: | ± 14KHz Min |
| Ultimate Attenuation: (Fo±KHz) +300 to +1000 (Fo±KHz) -200 to -1000 | 65dB 80dB |
| Ripple: | 1.0dB max |
| Insertion Loss: | 2.5dB Max |
| Termination Impedance Zt (Z//pF): | 1800Ω // 4.5pF Cc=12 pF |
| Number of poles: | 4 |
| RoHS Compliant: | Yes |

3. Mechanical Package: (2x for 4 pole)

MEASUREMENT DEFINITIONS

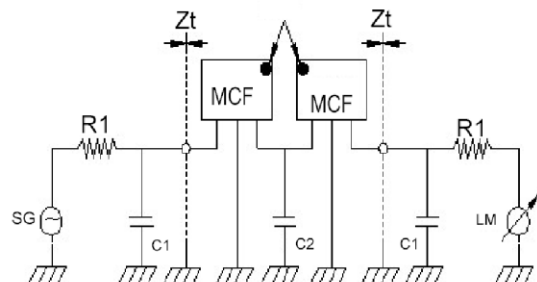


R1 = TERMINATING RESISTANCE
 C1 = TERMINATING CAPACITANCE
 C2 = JUNCTION CAPACITANCE
 CONSULT FACTORY FOR
 ALTERNATE LOADING CIRCUITS

4 pole MCF

Zt: TERMINATING IMPEDANCE
 HC-49 / U & UM- PACKAGES

TEST CIRCUIT
 COLORED
 DOT



CASE HC—

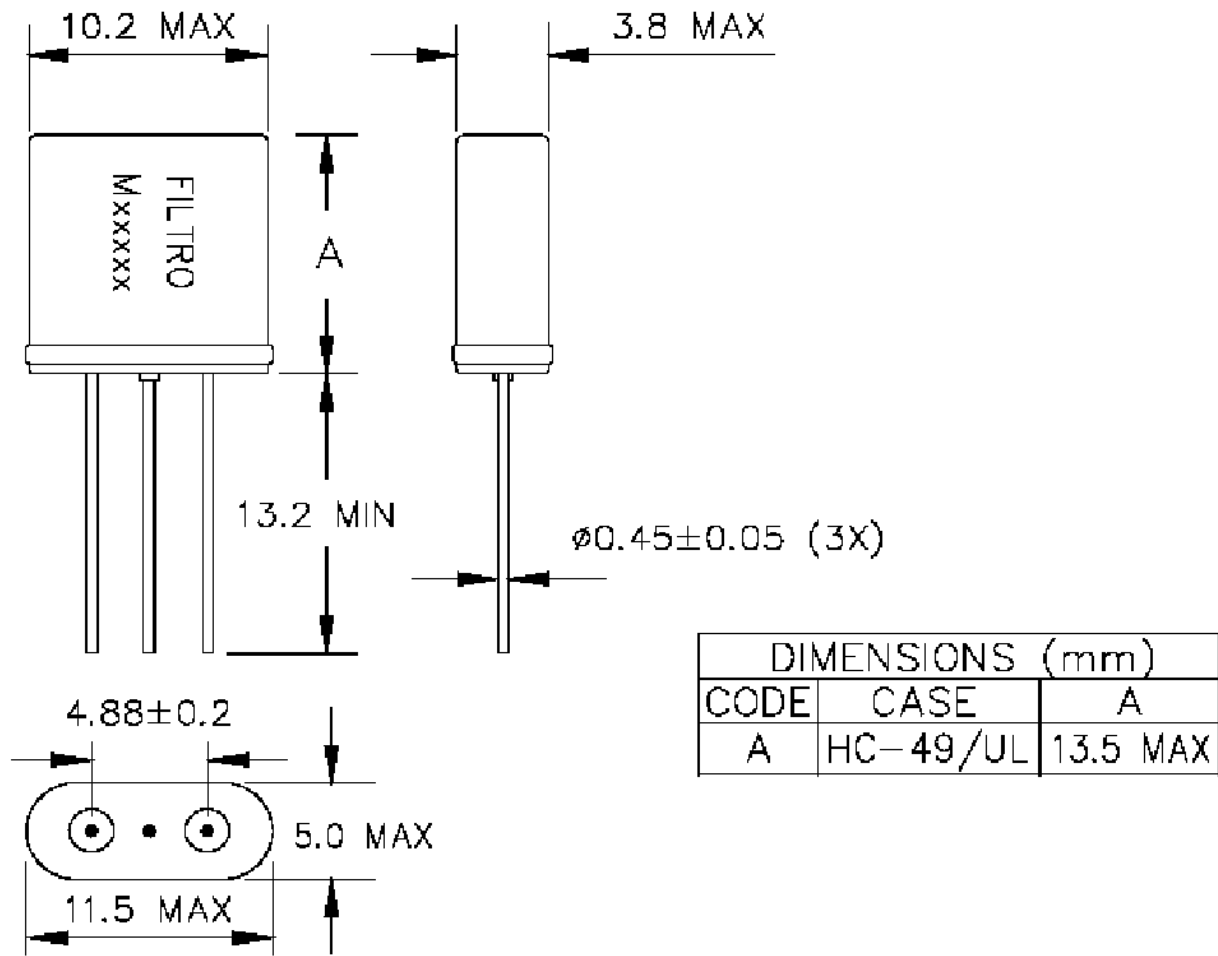


FIGURE M1 CASE HC