

SPECIFICATION
 FILTER SPECIFICATION
COMMERCIALY AVAILABLE

PART NUMBER: FNP-1180

ISSUED / REVISION	ENGINEER APPROVED	DOCUMENT CHECKED	DRAFTSMAN
1/26/11 DS	1/26/2011 SRJ	1/27/2011 BF	8/28/2012 GL

FILTRONETICS Inc

1. APPLICATION

THIS SPECIFICATION APPLIES TO A BAND PASS FILTER USING DIELECTRIC RESONATORS

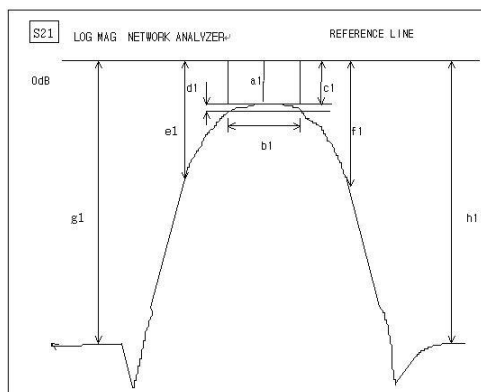
2. PART NUMBER:

PART NO	FNP-1180
---------	----------

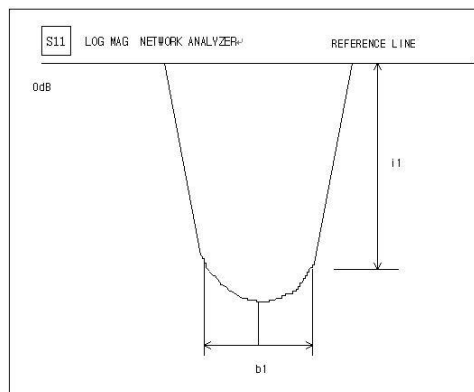
3. SPECIFICATIONS:

NO	ITEMS	Ref.	SPECIFICATION
1	Notch Center Frequency (Fn)	a1	600 MHz
2	Pass Band Low Frequency		AT 10~560 MHz
	Pass Band High Frequency		AT 640~1200 MHz
3	Notch Stop Band	At 597 ~603 MHz	55 dB Min
4	Insertion Loss	At 10~560 MHz	2.0 dB Max
		At 640~1200 MHz	2.5 dB Max
5	Impedance		50Ω
6	Maximum Input Power		1 W (+30 dBm)
7	Operating Temperature Range		-30 - +70°C

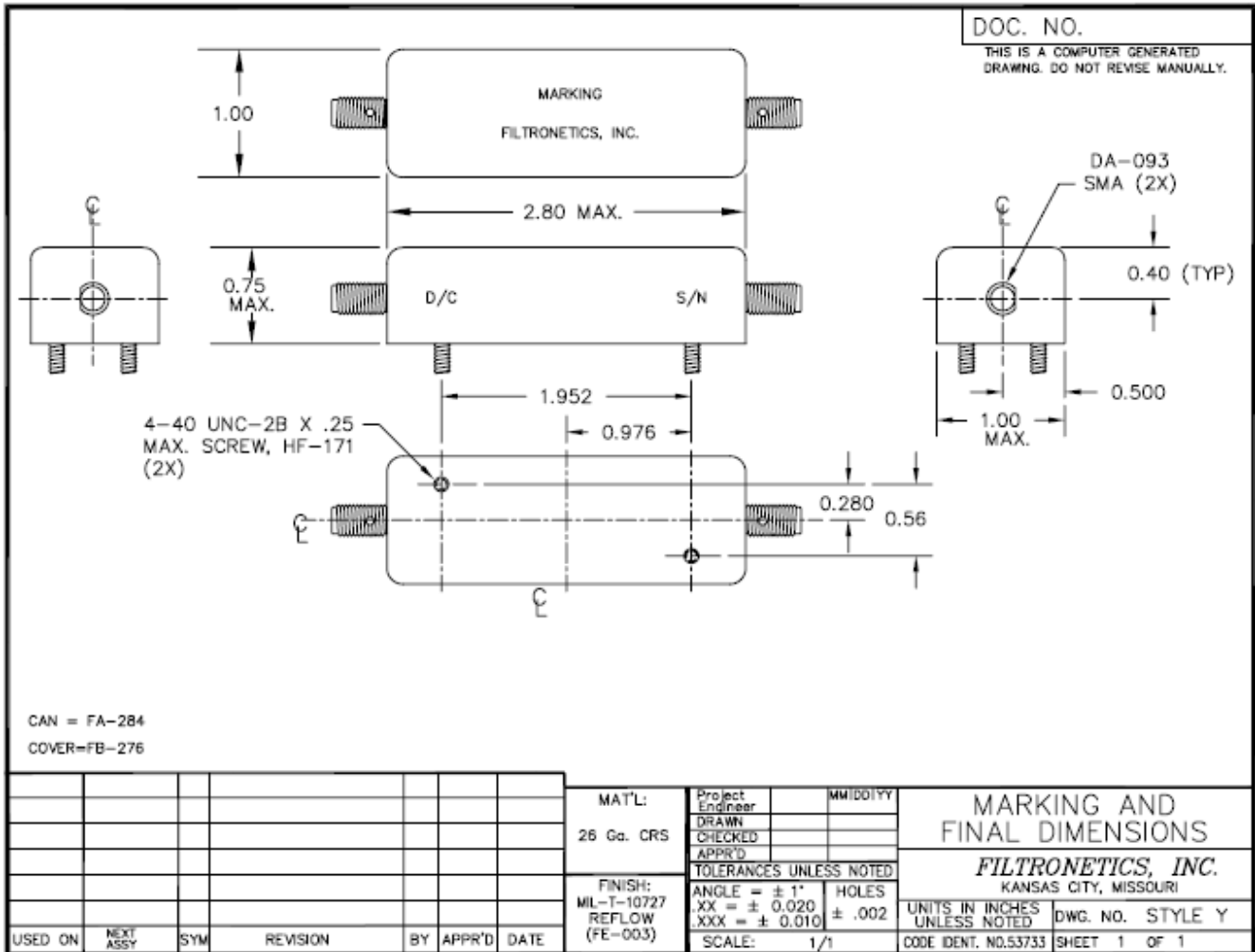
S21 LOG MAG NETWORK ANALYZER



S11 LOG MAG NETWORK ANALYZER



4. DIMENSIONS



6. DEFINITIONS

	DESCRIPTION	SPECIFICATION
Center Frequency	The midpoint of through band pass filter pass band, normally expressed as the arithmetic mean of the -3dB point. Also called Fo.	3. SPECIFICATION
Pass Band Width	The width of the pass band of a filter referenced to the minimum insertion loss point in the pass band. The pass band of a filter is stated as -1.0dB bandwidth.	
Insertion Loss	The loss of the filter, in dB, measured at center frequency relative to a through line (0 dB).	
Attenuation	Reduction of RF power through a filter measured in dB, at desired band and referenced to 0 dB. (Filter to be removed from circuit)	
Pass Band Ripple	Variations in loss in the pass band of the filter, superimposed upon the fundamental shape of the pass band.	
V.S.W.R in Pass Band	The ratio of the maximum value of a standing wave to its minimum value, related to the return loss in pass band.	