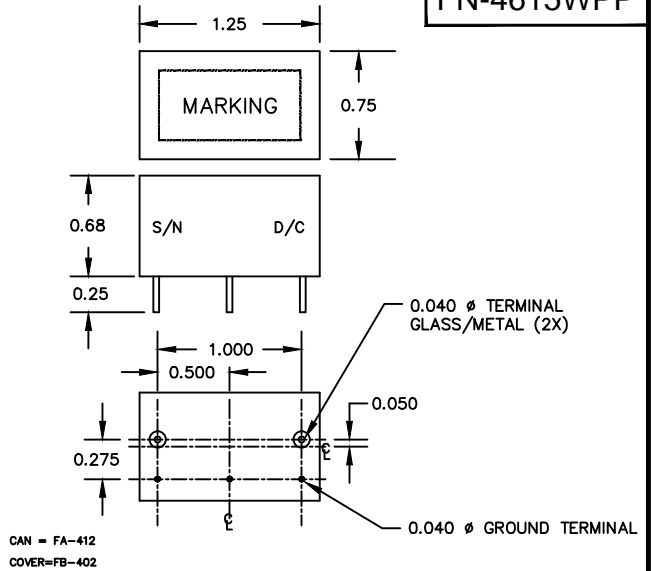
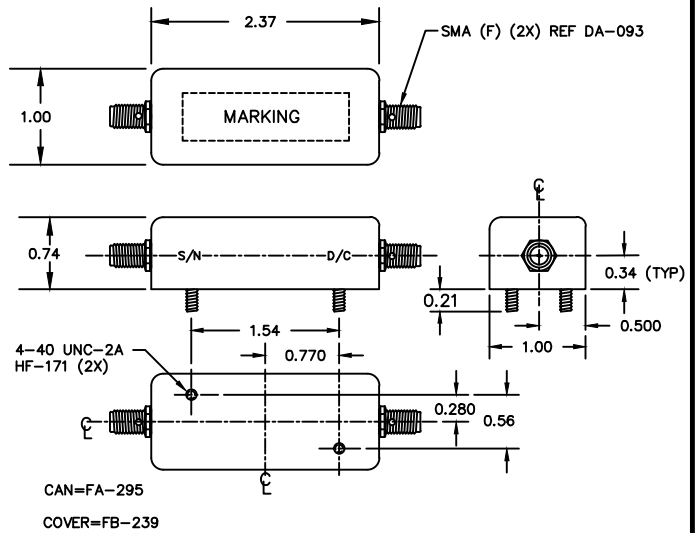


**FN-4615WPP**

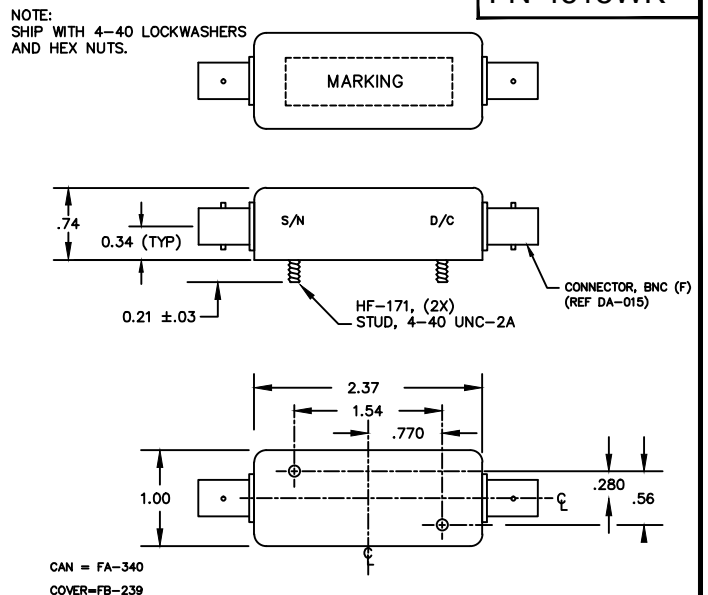
Fo: 143.05  
 IMPEDANCE : 50Ω  
 INSERTION LOSS: 4.5dB  
 RIPPLE: 0 dB TYP  
 3dB BANDWIDTH: ±20KHz  
 40dB BANDWIDTH: ±120 KHz  
 ULTIMATE ATTENUATION: 50 dB MIN  
 INPUT POWER: 0 dBm MAX  
 OPERATING TEMPERATURE : ROOM OR ADVISE  
 INSTALLATION TEMPERATURE: 200°C MAX



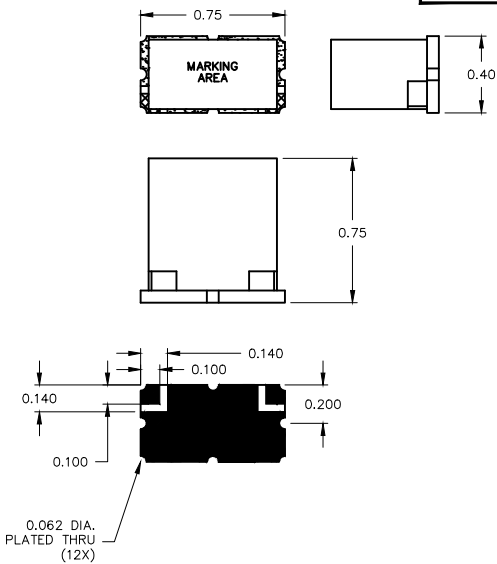
**FN-4615WF**



**FN-4615WK**



**FN-4615W**



**FN-4615W DRAWING SUMMARY**

**FILTRONETICS, INC.**  
 6010 PARRETTA DR.  
 KANSAS CITY, MO 64120  
 816-231-7375  
 FAX 816-241-0368  
 WWW.FILTRO.NET

TOLERANCES UNLESS NOTED

.XX = ± .020  
 .XXX = ± .010

ANGLE = ± 1°  
 HOLES = ± .002

REVISED