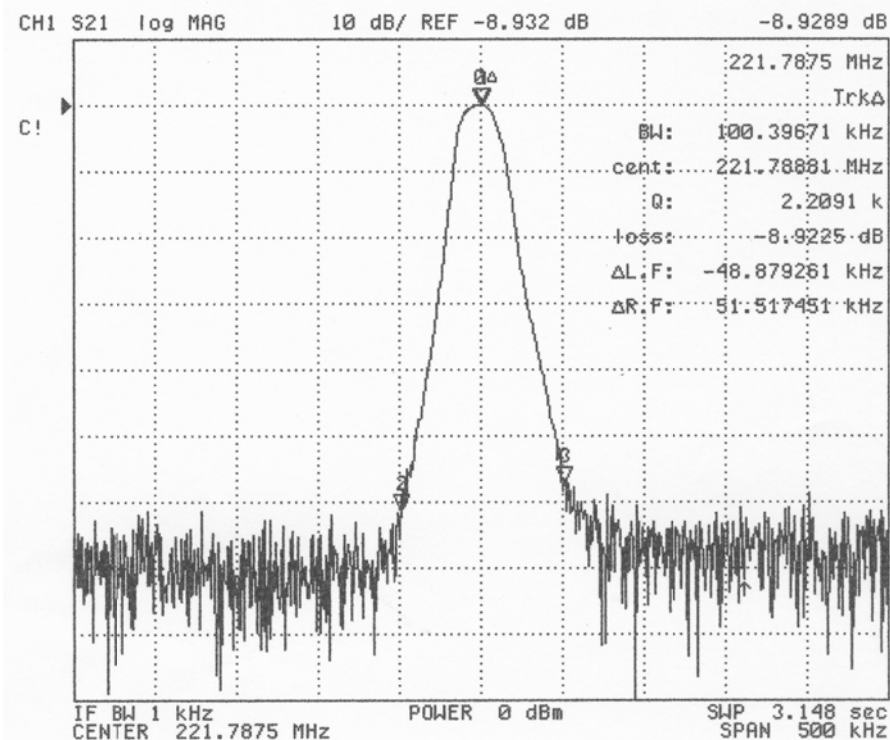


BANDPASS FILTER

Fo: * 221.7875 MHz
 IMPEDANCE : 50 OHMS (IN & OUT)
 INSERTION LOSS: 10 dB MAX
 RIPPLE: 0 dB
 3dB BANDWIDTH: 25 KHz NOM, 12.5 KHz MIN
 60dB BANDWIDTH: 120 KHz MAX
 ULTIMATE ATTENUATION: 60 dB MIN TYPICAL,
 EXCLUDING SPURIOUS, UP TO 350 MHz
 SPURIOUS ATTENUATION: 50 dB MIN
 OPERATING TEMPERATURE : -40°C to +70°C
 MAXIMUM OPERATING INPUT POWER: -5 dBm

* OTHER FREQUENCIES AVAILABLE,
 PLEASE CONSULT WITH FACTORY



FN-3885W DRAWING SUMMARY SHEET 1 of 2

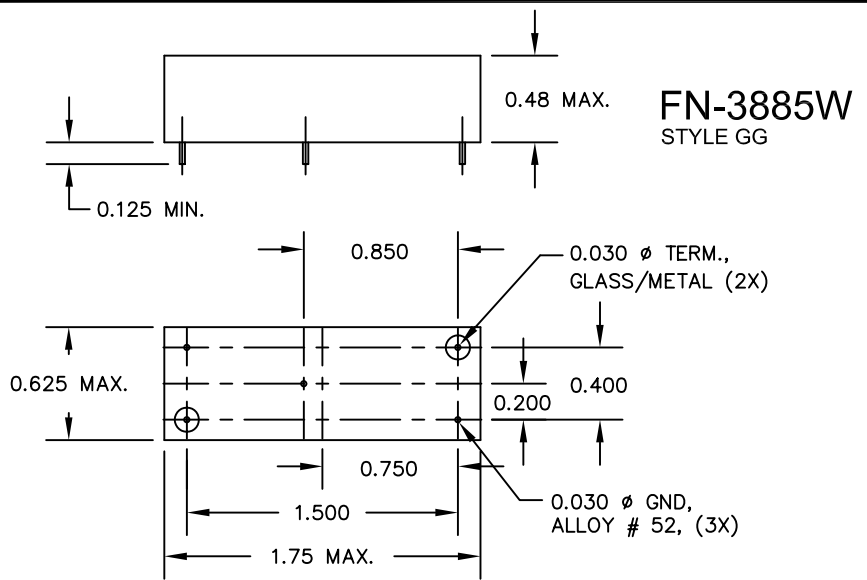
FILTRONETICS, INC.
 6010 PARRETTA DR.
 KANSAS CITY, MO 64120
 816-231-7375
 FAX 816-241-0368
 WWW.FILTRO.NET

TOLERANCES UNLESS NOTED

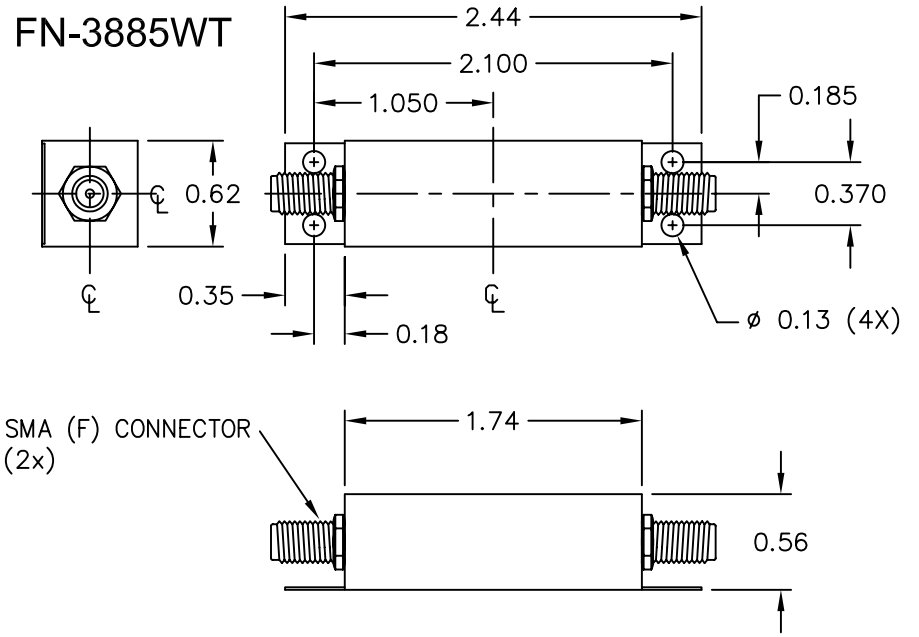
ANGLE = ± 1°	HOLES
.XX = ± .020	± .002
.XXX = ± .010	

REVISED 8/13/07

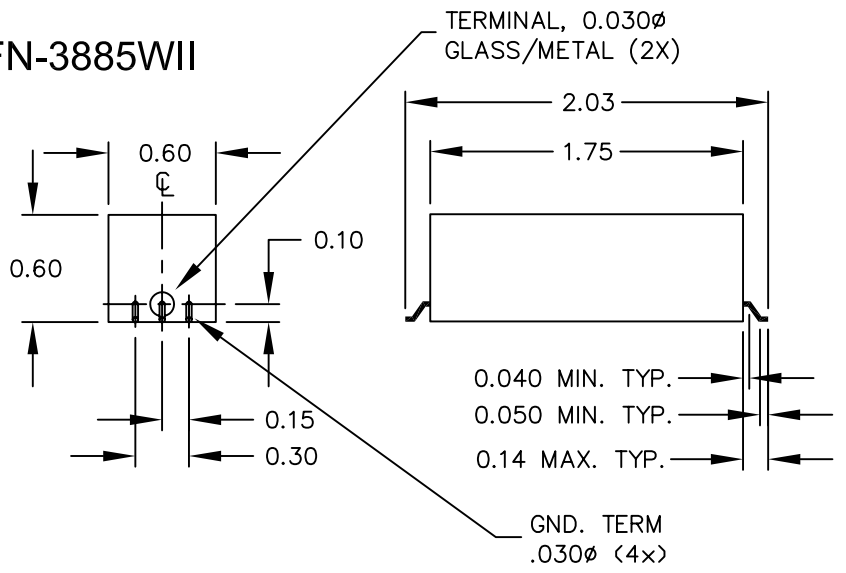
FN-3885W



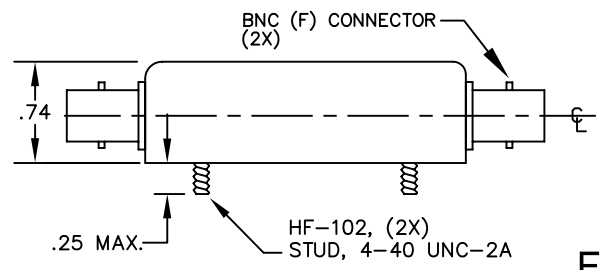
FN-3885WT



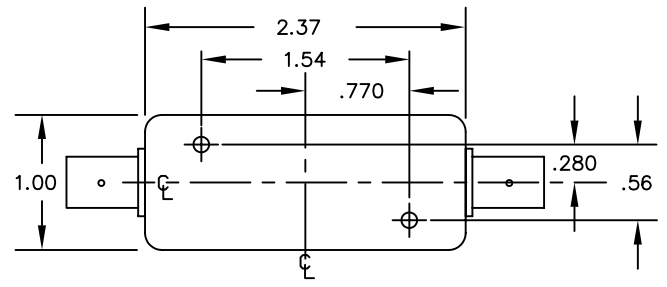
FN-3885WII



BNC (F) CONNECTOR
(2X)



FN-3885WK



FN-3885W DRAWING SUMMARY SHEET 2 of 2

FILTRONETICS, INC.
6010 PARRETTA DR.
KANSAS CITY, MO 64120
816-231-7375
FAX 816-241-0368
WWW.FILTRO.NET

TOLERANCES UNLESS NOTED	
ANGLE = $\pm 1^\circ$	HOLES $\pm .002$
.XX = $\pm .020$	
.XXX = $\pm .010$	
REVISED 8/13/07	