

FN-3809W[Package] - [Frequency]

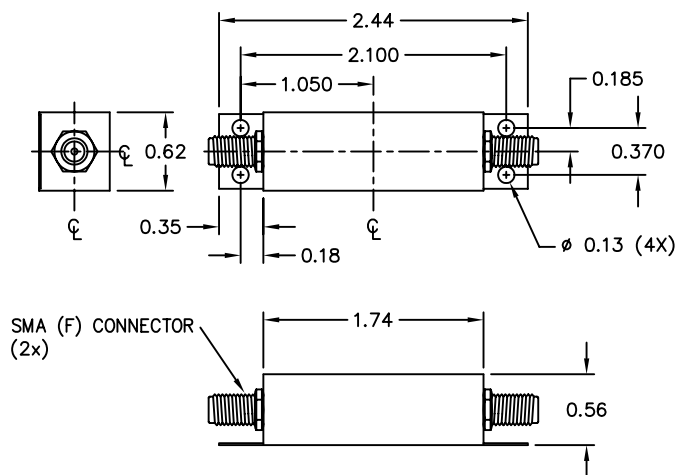
Example: Fo=250 MHz w/ SMA Connectors =  
FN-3809WT-250

**BANDPASS FILTER**

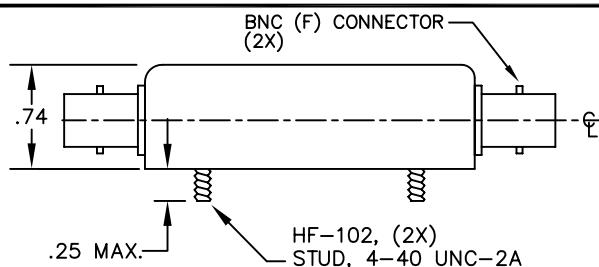
Fo: 220 MHz to 280 MHz  
SPECIFY WITH DASH NUMBER

3dB BANDWIDTH: ±50 KHz MIN  
40 dB BANDWIDTH: ±200 KHz MAX  
INSERTION LOSS: 5.0 dB MAX  
IMPEDANCE: 50 OHMS (IN & OUT)  
RIPPLE: 0.5 dB MAX  
OPERATING TEMPERATURE: 0°C to +70°C  
MAX INPUT POWER: TBD (+5 dBm EST)  
(SUPPLIED WITH TEST DATA)

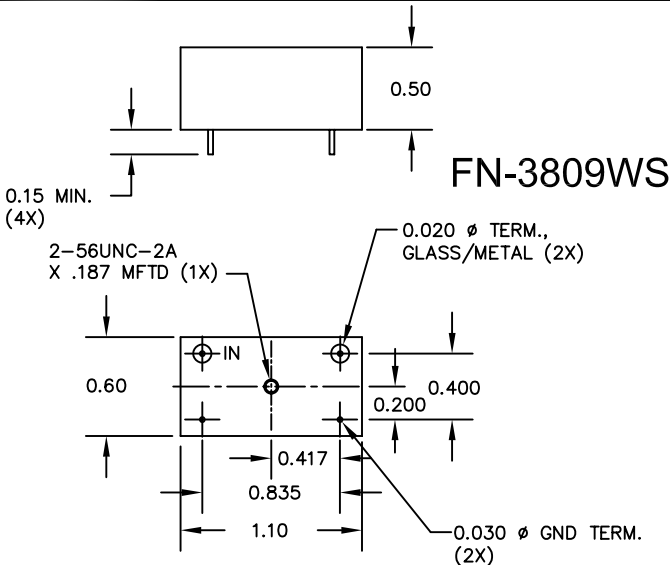
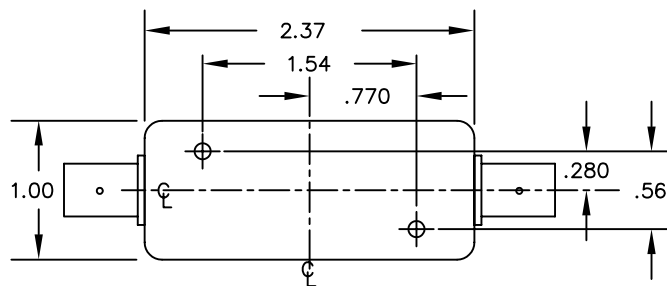
FN-3809W



FN-3809WT



FN-3809WK



**FN-3809W DRAWING SUMMARY**

**FILTRONETICS, INC.**

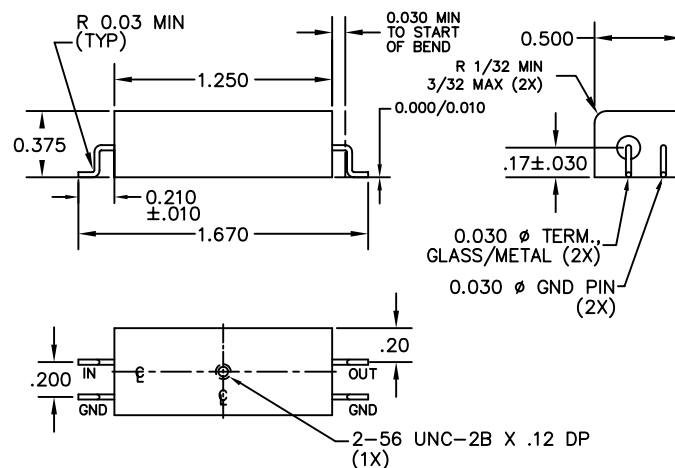
6010 PARRETTA DR.  
KANSAS CITY, MO 64120  
816-231-7375 FAX 816-241-0368  
WWW.FILTRO.NET

TOLERANCES UNLESS NOTED

.XX = ± .020  
.XXX = ± .010

ANGLE = ± 1°  
HOLES = ± .002

REVISED 06/11/2012 PER ECO 4379



FN-3809WEE