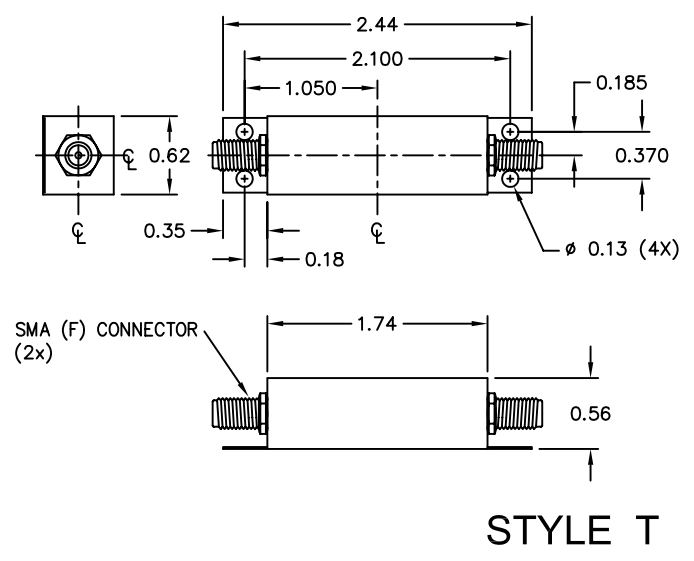
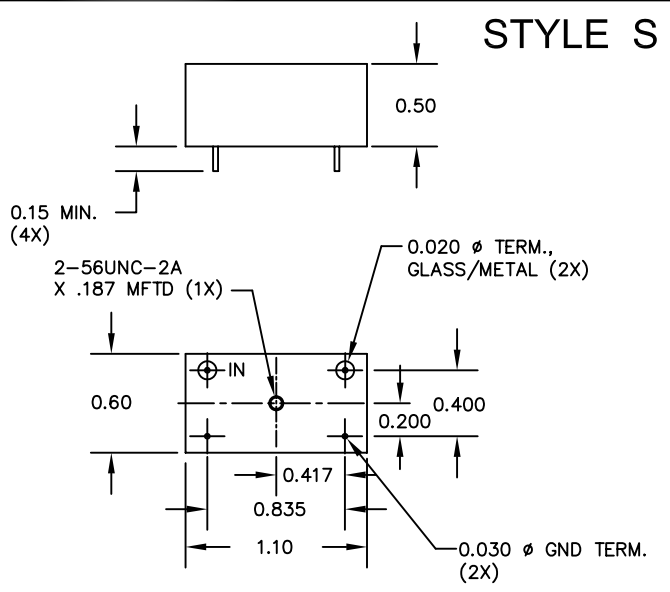


FN-2085W

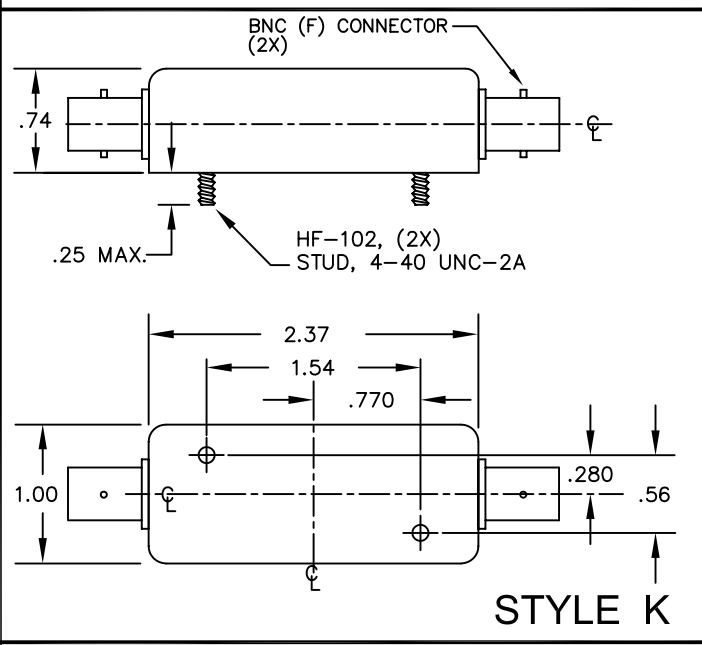
Fo: 70.0 MHz
 IMPEDANCE : 50 OHMS (IN & OUT)
 INSERTION LOSS: 4.0 dB MAX
 RIPPLE (± 15 KHz): .25 dB MAX
 (± 25 KHz): 1.0 dB MAX
 1dB BANDWIDTH: ± 25 KHz MIN
 60dB BANDWIDTH: ± 200 KHz MAX
 SPURIOUS ATTENUATION: 60 dB MIN
 OPERATING TEMPERATURE : -54°C to +85°C



STYLE T



STYLE S



STYLE K

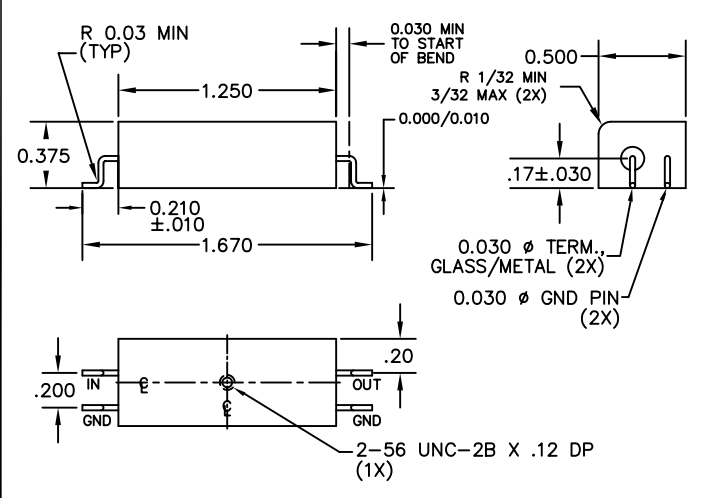
FN-2085W DRAWING SUMMARY

FILTRONETICS, INC.
 6010 PARRETTA DR.
 KANSAS CITY, MO 64120
 816-231-7375
 FAX 816-241-0368
 WWW.FILTRO.NET

TOLERANCES UNLESS NOTED

.XX = $\pm .020$	ANGLE = $\pm 1^\circ$
.XXX = $\pm .010$	HOLES = $\pm .002$

REVISED 05/29/12 ECO 4379



STYLE EE