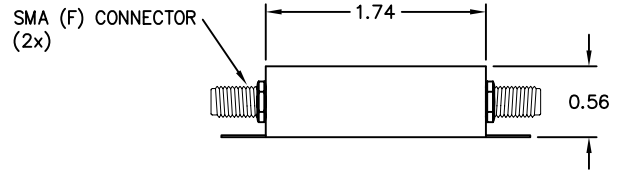
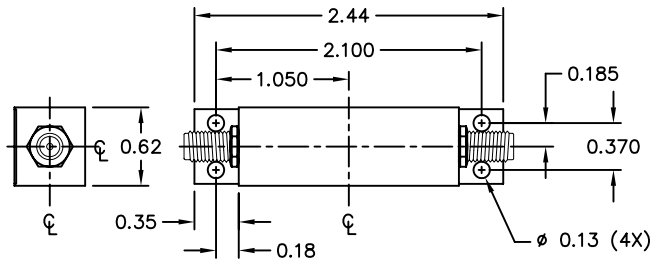


# BANDPASS FILTER

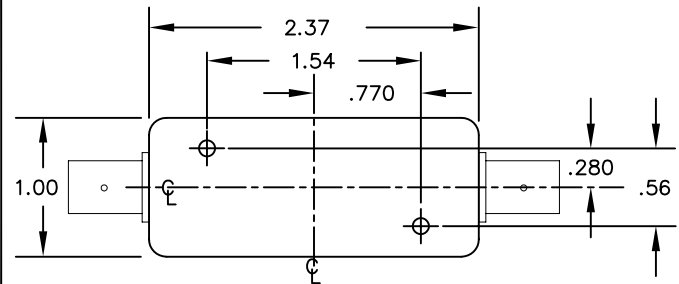
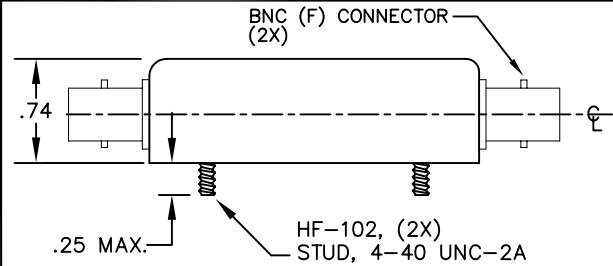
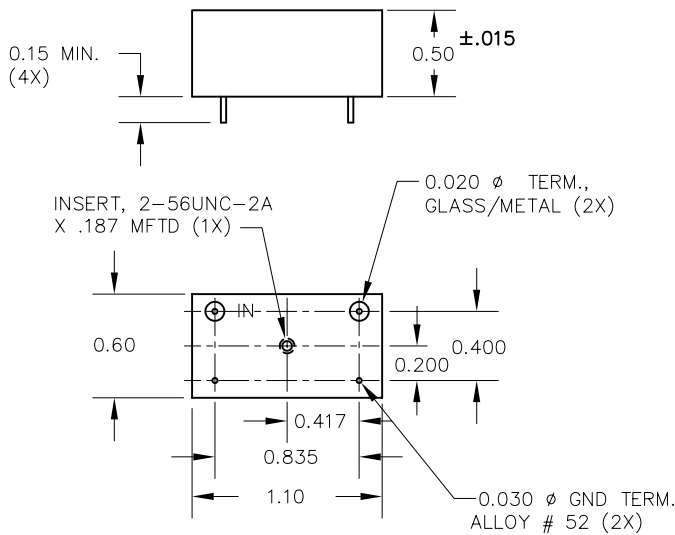
**Fo:** 46.5 MHz  
**IMPEDANCE :** 50 OHMS (IN & OUT)  
**INSERTION LOSS:** 7.5 dB MAX  
**RIPPLE:** 1.0 dB MAX  
**6dB BANDWIDTH:** 200 KHz MIN  
**55dB BANDWIDTH:** 500 KHz MAX  
**SPURIOUS ATTENUATION:** 50 dB MIN  
**OPERATING TEMPERATURE :** 0°C to +50°C

**FN-1870W**



**FN-1870WT**

**FN-1870WS**



**FN-1870WK**

## FN-1870W DRAWING SUMMARY

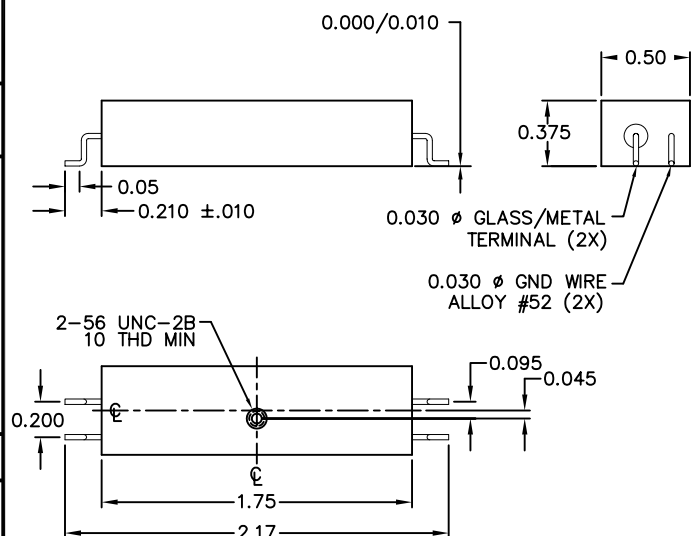
**FILTRONETICS, INC.**  
 6010 PARRETTA DR.  
 KANSAS CITY, MO 64120  
 816-231-7375  
 FAX 816-241-0368  
 WWW.FILTRO.NET

TOLERANCES UNLESS NOTED

.XX = ± .020  
.XXX = ± .010

ANGLE = ± 1°  
HOLES = ± .002

REVISED 10/27/06



**FN-1870WFF**