

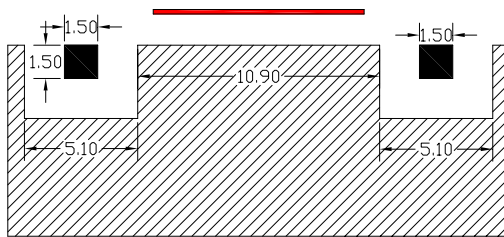
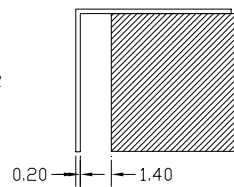
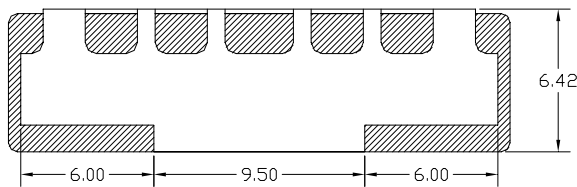
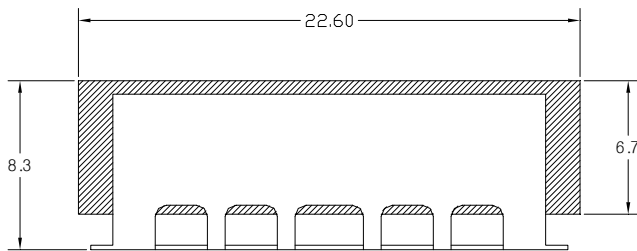
1. PART NUMBER: CFM-18800706

2. SPECIFICATION:

NO	Parameter	Specification	
1	Center Frequency (Fo)	1880 MHz	
2	Pass Bandwidth (BW)	Fo ± 35 MHz	
3	Insertion Loss in BW	3.0 dB max. (Typ. 2.0 dB)	
4	Ripple in BW	0.75 dB max. (Typ. 0.5 dB)	
5	Return Loss in BW	13 dB min. (Typ. 16 dB)	
6	Attenuation	At 1780 MHz	50 dB min.
		At 1980 MHz	50 dB min.
7	Impedance	50 Ohms	
8	Input Power	3 W max.	
9	Operating Temperature Range	-40°C to +85°C	

3. DIMENSIONS

TOLERANCE : ± 0.3 mm



- :I/O PAD
- :GROUND
- :CASE GROUND