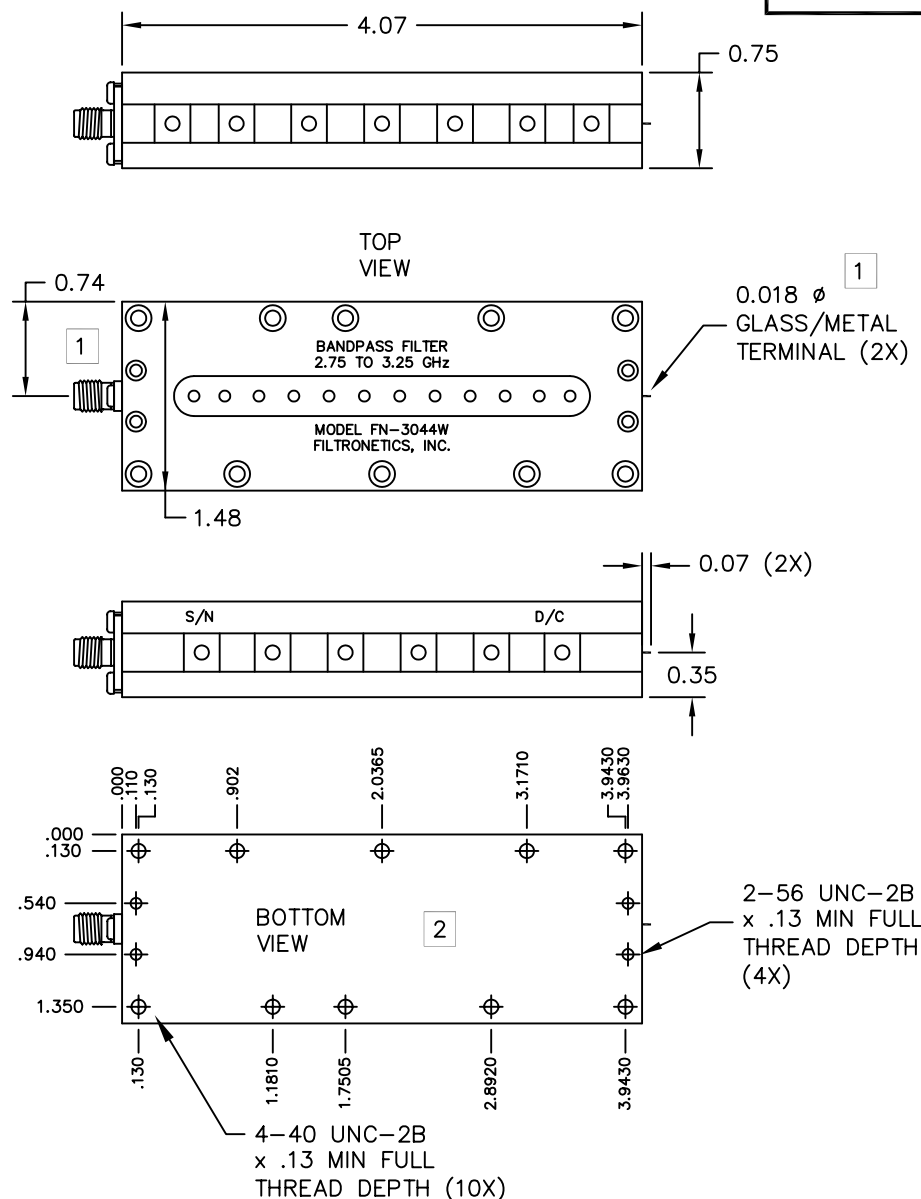


BANDPASS FILTER

Fo: 3.0 GHz
IMPEDANCE : 50 ohm IN / OUT
INSERTION LOSS: 1 dB MAX
1dB BANDWIDTH: 550 MHz MIN
60dB BANDWIDTH: 800 MHz MAX
ULTIMATE ATTENUATION to 6 GHz: 90 dB MIN
PASSBAND RETURN LOSS : 14 dB MIN
POWER : 100 WATTS MAX
OPERATING TEMPERATURE : -40°C to +95°C



FN-3044W DRAWING SUMMARY

FILTRONETICS, INC.
 6010 PARRETTA DR.
 KANSAS CITY, MO 64120
 816-231-7375
 FAX 816-241-0368
 WWW.FILTRO.NET

TOLERANCES UNLESS NOTED

ANGLE = ± 1°	HOLES ± .002
.XX = ± .020	
.XXX = ± .010	

REVISED 2/6/03

1 THIS FILTER COMES WITH TWO REMOVABLE SMA (F) CONNETORS. WITH CONNETORS REMOVED FILTER CAN BE DIRECTLY CONNECTED TO CIRCUIT BOARD.

2 BOTTOM SURFACE SILVER PLATE, REST OF FILTER WHITE EPOXY PAINT