

# BANDPASS FILTER

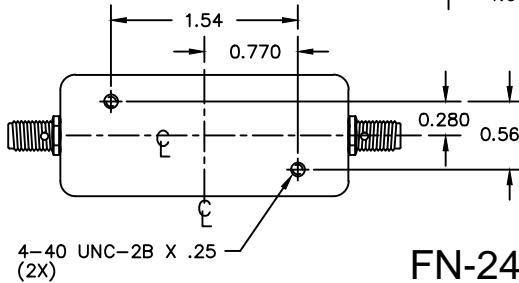
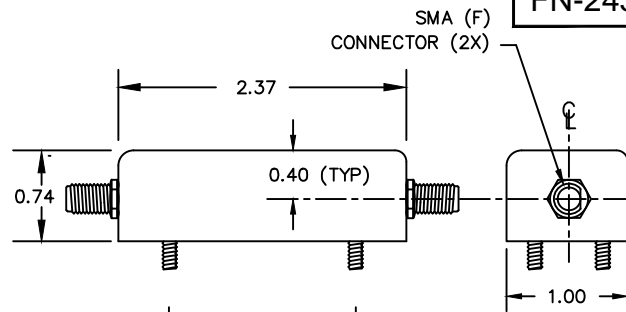
**Fo:** 70.0 MHz  
**IMPEDANCE :** 50 OHMS (IN & OUT)  
**INSERTION LOSS:** 6.0 dB MAX @ Fo  
**3dB BANDWIDTH:** 350 KHz MIN  
**20dB BANDWIDTH:** ±500 KHz MAX  
**40dB BANDWIDTH:** ±1.0 MHz MAX  
**50dB BANDWIDTH:** ±1.75 MHz MAX  
**65dB BANDWIDTH:** ±3.5 MHz MAX

## ULTIMATE REJECTION (EXCLUDING SPURIOUS):

73.5 MHz to 150 MHz: -60dB  
 150 MHz to 225 MHz: -35dB  
 225 MHz to 280 MHz: -15dB  
 280 MHz to 510 MHz: -30dB  
 510 MHz to 800 MHz: -15dB

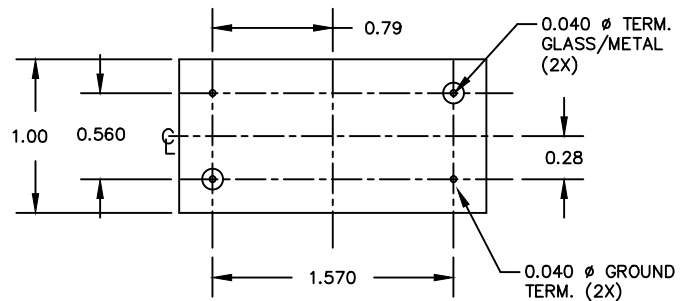
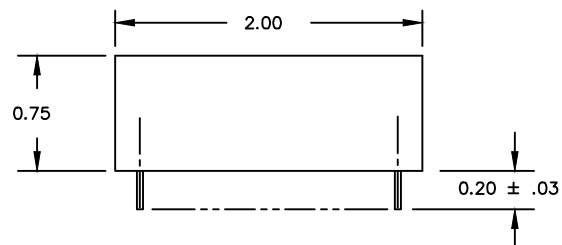
**INPUT POWER:** +10 dBm MAX  
**OPERATING TEMPERATURE :** -55°C to +85°C  
**STORAGE TEMPERATURE:** -57°C to +95°C

FN-2437W

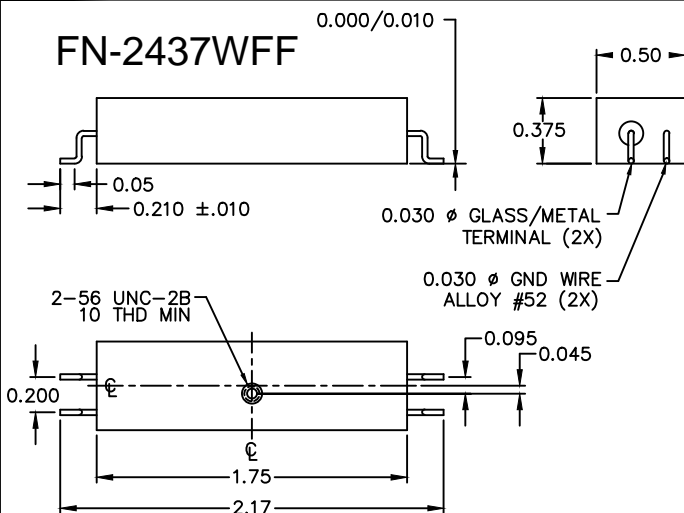


FN-2437WF

FN-2437W



FN-2437WFF



## FN-2437W DRAWING SUMMARY

**FILTRONETICS, INC.**  
 6010 PARRETTA DR.  
 KANSAS CITY, MO 64120  
 816-231-7375  
 FAX 816-241-0368  
 WWW.FILTRO.NET

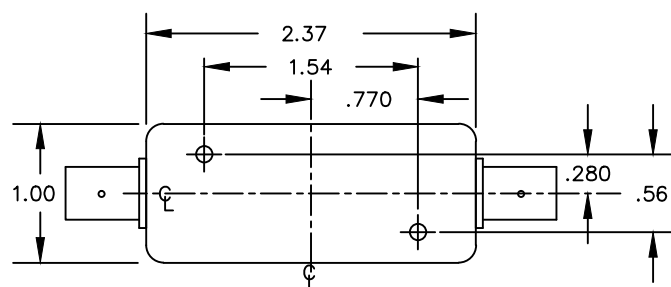
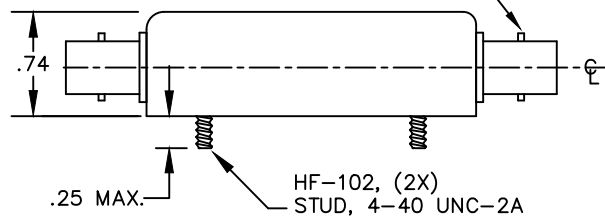
TOLERANCES UNLESS NOTED

.XX = ± .020  
 .XXX = ± .010

ANGLE = ± 1°  
 HOLES = ± .002

REVISED 10/18/2016

BNC (F) CONNECTOR (2X)



FN-2437WK