

SPECIFICATION

COMMERCIALY AVAILABLE

ITEM: SAW FILTER
PART NUMBER: SF140290

RoHS
Pb Free

Revision Made:

ISSUED / REVISION	ENGINEER APPROVED	DOCUMENT CHECKED	DRAFTSMAN
7/12/10 DS	7/14/2010 SW	7/14/2010 BF	7/14/2010 GL

FILTRONETICS Inc

1. Electrical Specifications:

Parameters Description	Unit	Minimum	Typical	Maximum
Center Frequency (F_0)	MHz	-	140.0	-
Insertion Loss @ F_0	dB	-	14.5	16.0
Temperature Coefficient	ppm/°C	-	-86	-
Amplitude Ripple within @ ± 13.0 MHz	dB _{p-p}	-	0.45	1.0
Group Delay Variation within @ ± 13.0 MHz	nSec	-	50	80
Absolute Delay @ F_0	μ sec	-	0.91	-
Bandwidth @ -1.0 dB	MHz	27.5	28.0	-
Bandwidth @ -3.0 dB	MHz	28.5	29.0	-
Bandwidth @ -40.0 dB	MHz	-	32.8	33.5
Relative Attenuation:				
Lower sidelobe	dB	45	50	-
Upper sidelobe	dB	45	50	-

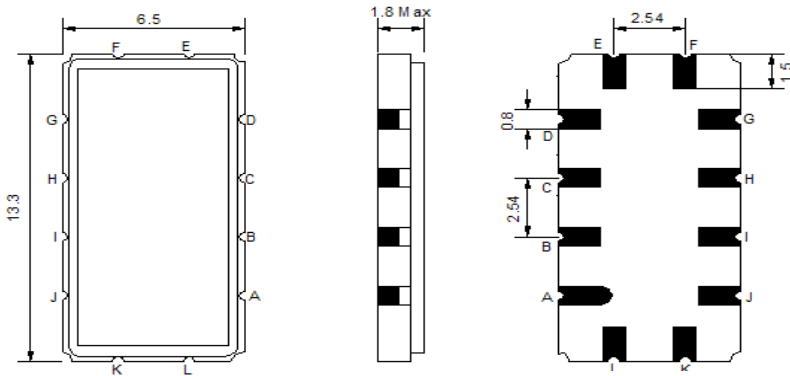
Notes: (1) With Matching Network (Ref. Testing Environment Circuit as shown below).

Those impedances could be modified with different impedance values and/or structures, if necessary.

Maximum Ratings

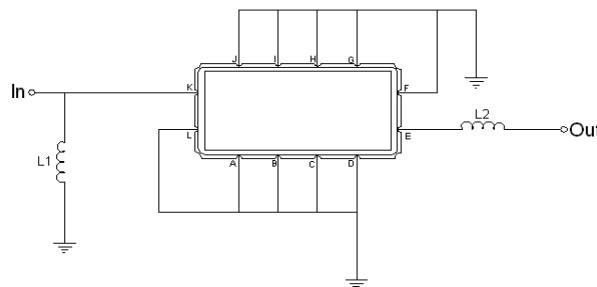
Parameters Description	Unit	Minimum	Typical	Maximum
Operating Temperature Range	°C	-30	-	80
Storage Temperature Range	°C	-40	-	85
Maximum DC Voltage	V	-	-	10
Maximum Input Power	dBm	-	-	10
Source Impedance (single ended) ⁽¹⁾	Ω	-	50	-
Load Impedance (single ended) ⁽¹⁾	Ω	-	50	-
Package type & size	V			
Length x Width	mm ²	-	13.3 x 6.5	-
Height	mm	-	-	1.8

2. Mechanical Package:



A, B, C, D, F, G, H, I, J, L	Ground
K	Input
E	Output
Pin Description	

Testing Environment



Test Fixture & Values	
Input	L1=22nH Q >40
Output	L2=27nH Q.>40
Source/Load Impedance	50 Ω

3. Plots

