

SPECIFICATION

COMMERCIALY AVAILABLE

ITEM: MONOLITHIC CRYSTAL FILTER

PART NUMBER: M10JBB

RoHs Compliant

ISSUED / REVISION	ENGINEER APPROVED	DOCUMENT CHECKED	DRAFTSMAN
5/13/11 PM	10/13/11 TFG		10/13/11 GL

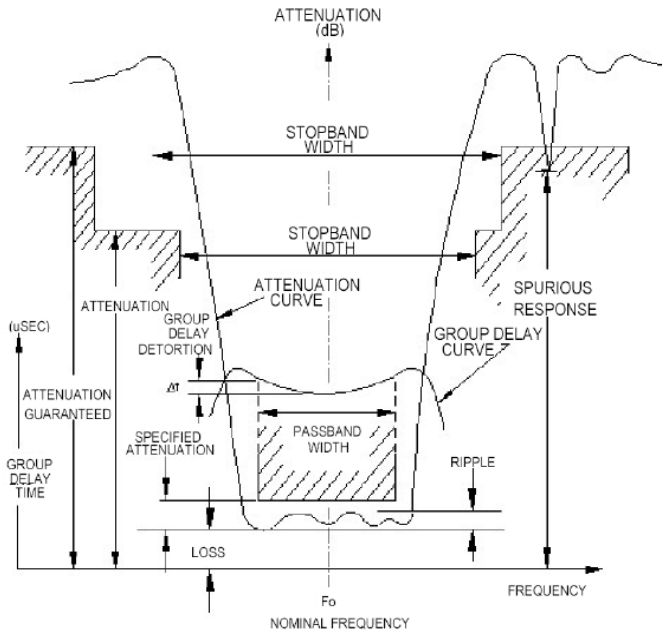
FILTRONETICS Inc

1. Part Number: M10JBB

2. Electrical Specifications:

Center Frequency (Fo)	10.7MHz
3 dB Band Width:	±15KHz Min
Insertion Loss:	2.5dB Max
Pass Band Ripple:	1.0dB Max
30 dB Stop Band:	±40KHz Max
Ultimate Attenuation:	
+300KHz to +1000KHz	65dB Min
-250KHz to -1000KHz	80dB Min
Input Power	0dBm Max
Impedance:	5500Ω//1.0pf C2 (0pf)
Poles:	4
RoHS Compliant:	Yes

MEASUREMENT DEFINITIONS



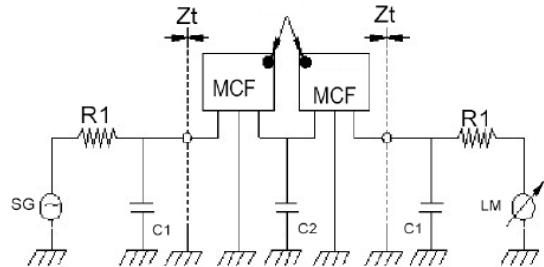
R1 = TERMINATING RESISTANCE
 C1 = TERMINATING CAPACITANCE
 C2 = JUNCTION CAPACITANCE
 CONSULT FACTORY FOR
 ALTERNATE LOADING CIRCUITS

4 pole MCF

Zt: TERMINATING IMPEDANCE

HC-49 / U & UM- PACKAGES

TEST CIRCUIT
 COLORED
 DOT



3. Mechanical Package Style: (2x for 4 pole)

CASE HC—

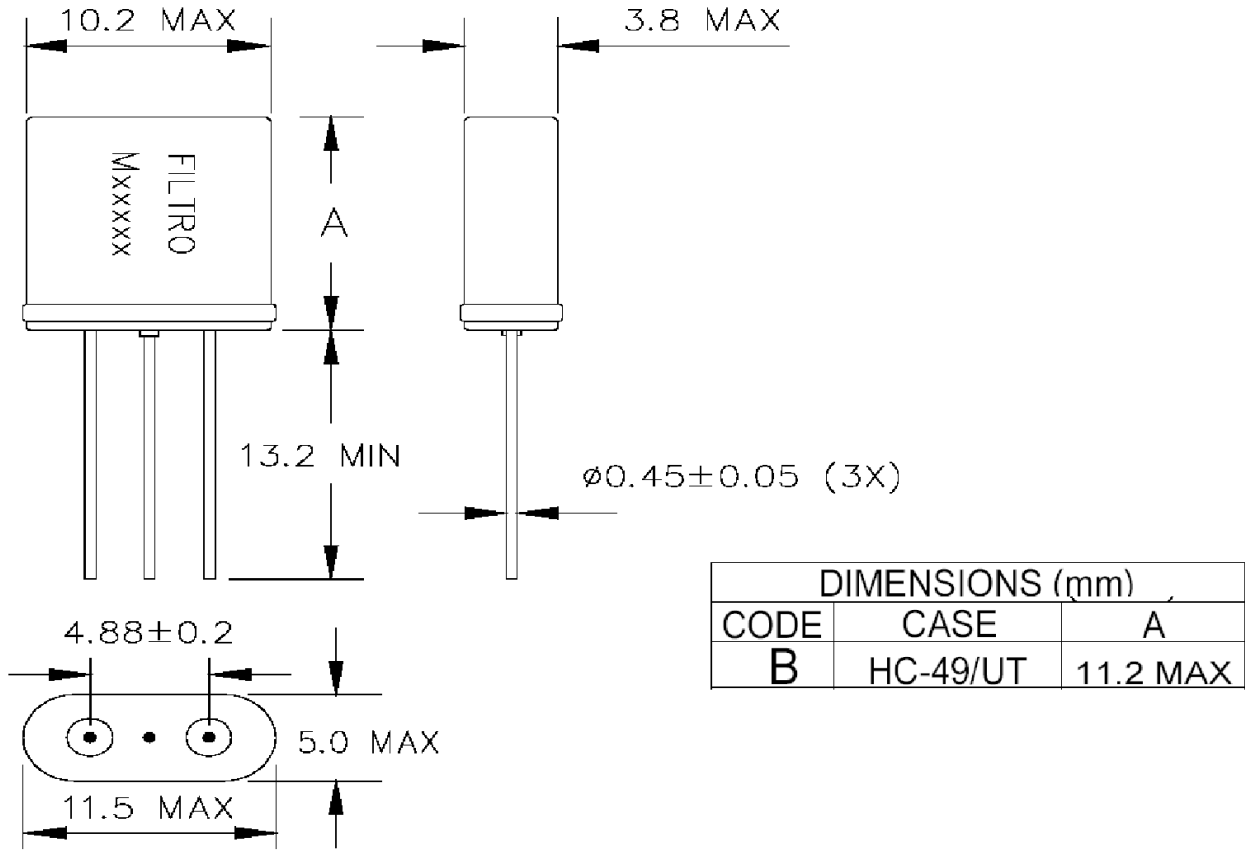


FIGURE M1 CASE HC